

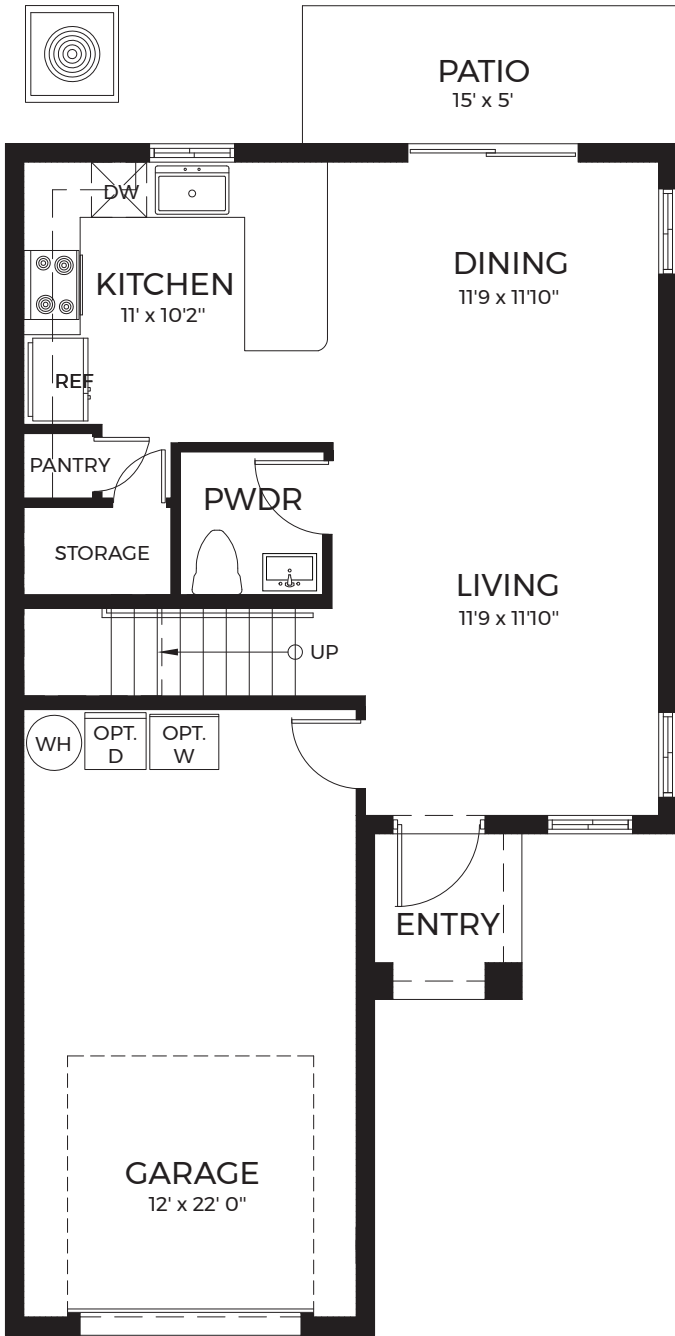


Argent

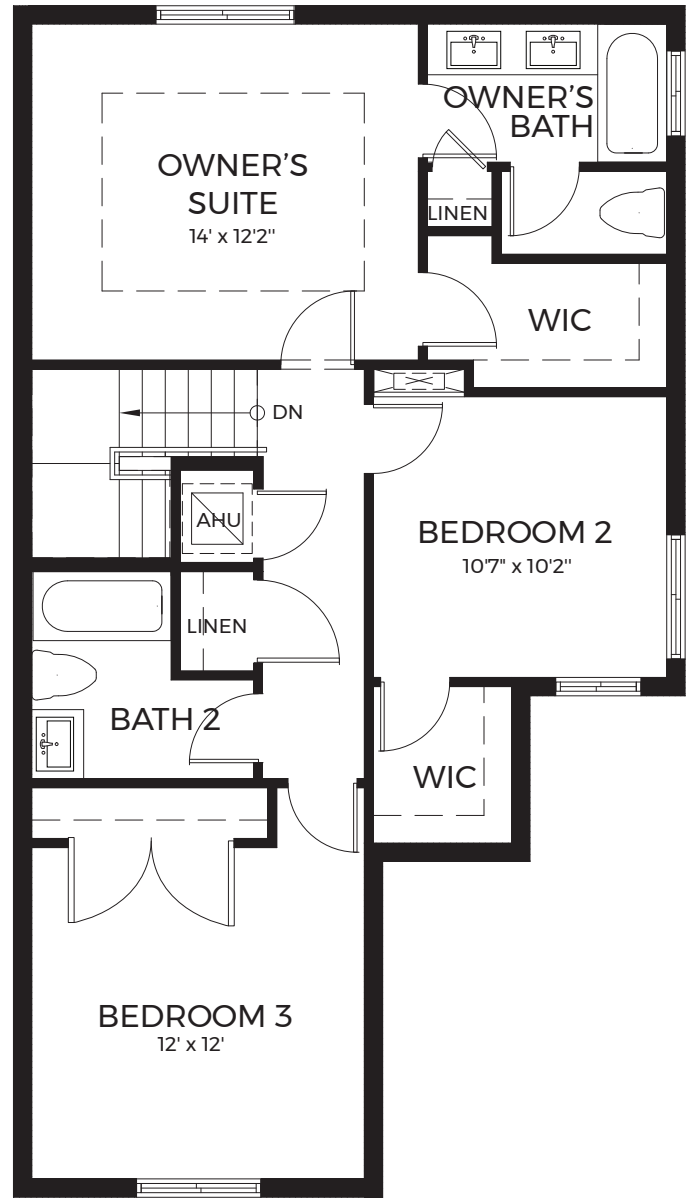
at Avella Park

drhorton.com

D.R. Horton is equal housing opportunity builder. Pictures, photographs, features, colors, drawings, floor plans, square footages and sizes are approximate for illustration purposes only and will vary from the homes as built. All drawings are the artist's concept. Florida Certified General Contractor #GCC059394



FIRST FLOOR



SECOND FLOOR

Two-Story, 3 Bedrooms, 2.5 Bathrooms
1-Car Garage

1st Floor A/C Sq. Ft.....	544
2nd Floor A/C Sq. Ft.....	869
Total A/C Sq. Ft.....	1,413
Entry.....	32
Garage.....	293
Total.....	1,738

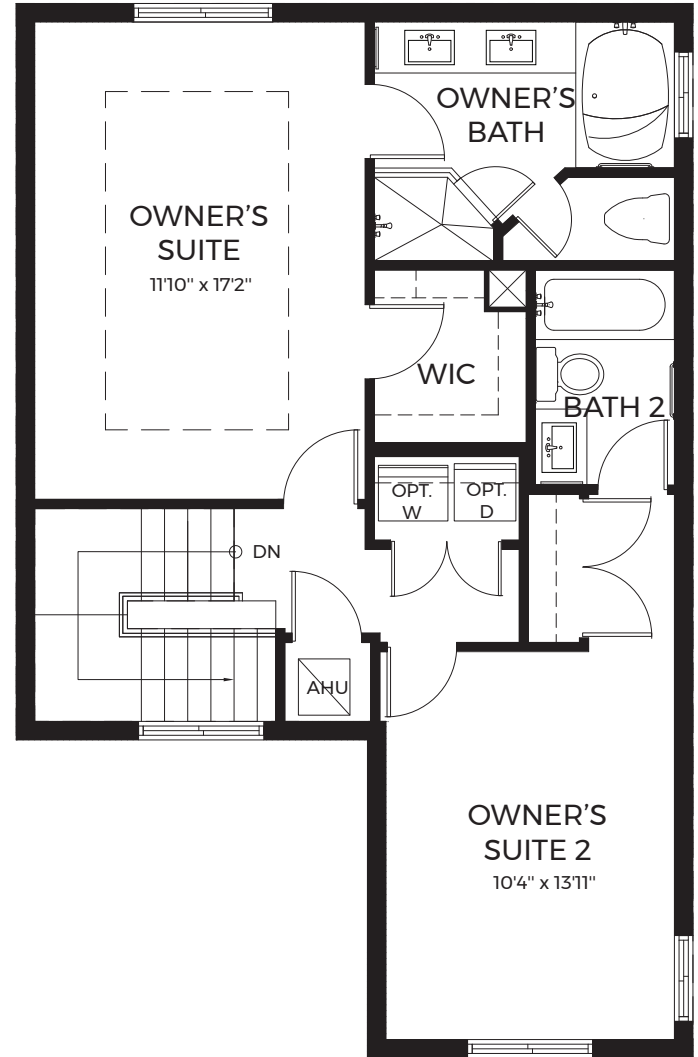
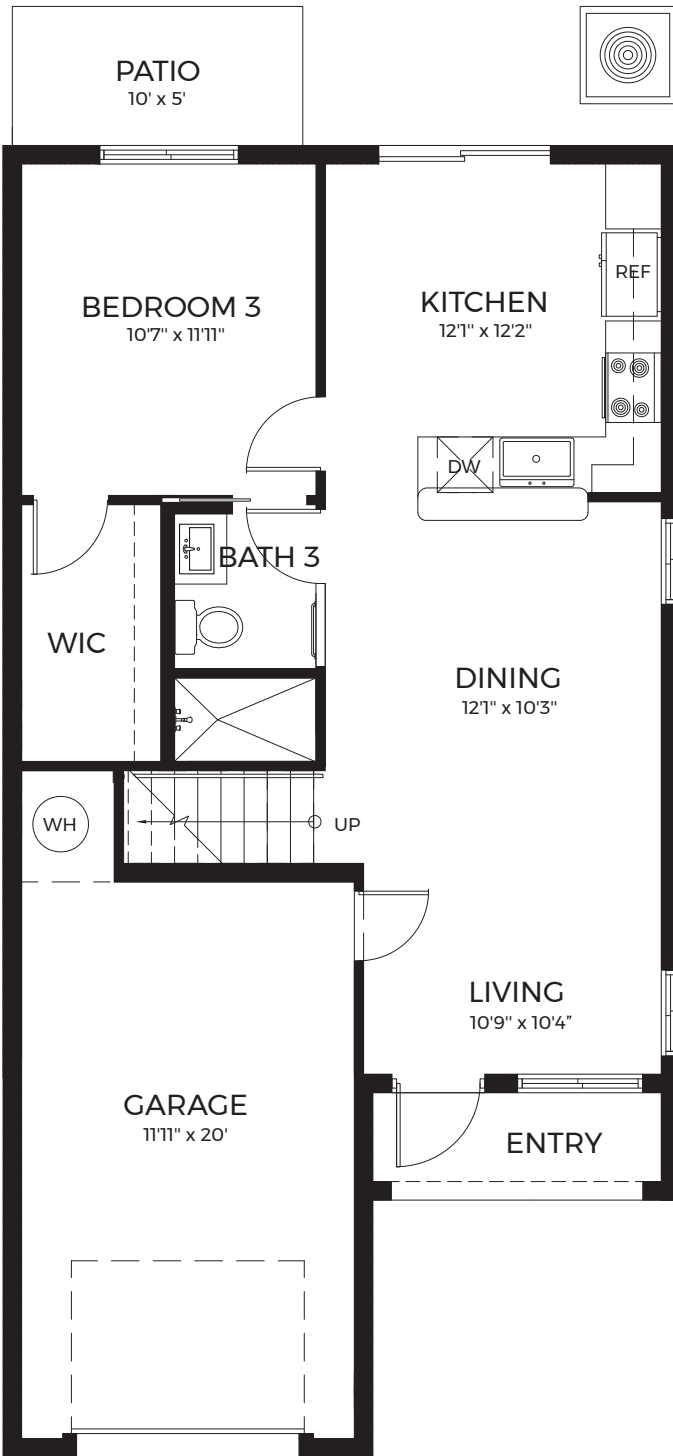


Bravo

at Avella Park

drhorton.com

D.R. Horton is equal housing opportunity builder. Pictures, photographs, features, colors, drawings, floor plans, square footages and sizes are approximate for illustration purposes only and will vary from the homes as built. All drawings are the artist's concept. Florida Certified General Contractor #CGC059394



1st Floor A/C Sq. Ft.	724
2nd Floor A/C Sq. Ft.	769
Total A/C Sq. Ft.	1,493
Entry	43
Garage	263
Total	1,799

Two-Story, 3 Bedrooms, 3 Bathrooms
1-Car Garage



BUILDING - "2"



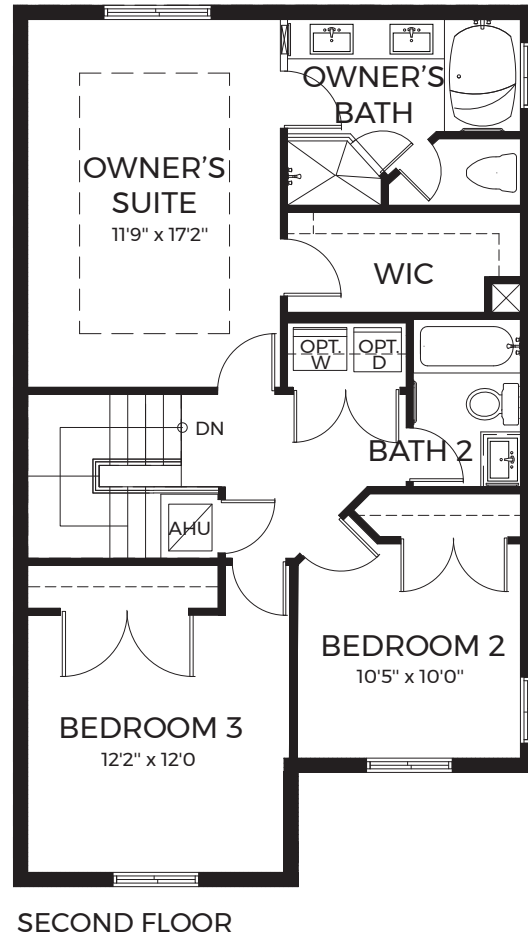
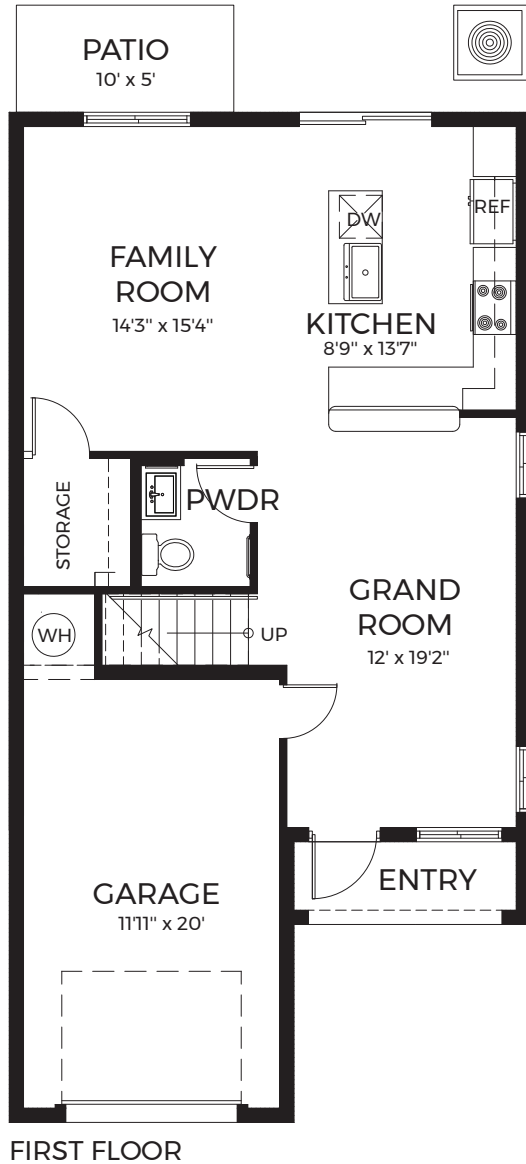
BUILDING - "3"

Coventry

at Avella Park

drhorton.com

D.R. Horton is equal housing opportunity builder. Pictures, photographs, features, colors, drawings, floor plans, square footages and sizes are approximate for illustration purposes only and will vary from the homes as built. All drawings are the artist's concept. Florida Certified General Contractor #CGC059394



Two-Story, 3 Bedrooms,
2.5 Bathrooms, 1-Car Garage

1st Floor A/C Sq. Ft.....	724
2nd Floor A/C Sq. Ft.....	929
Total A/C Sq. Ft.....	1,653
Entry.....	43
Garage.....	263
Total.....	1,959

Avella Park

Homestead

Architectural Artistry

- Architecturally designed exterior elevations
- Reinforced concrete monolithic foundation slab
- Masonary exterior walls on 1st and 2nd floor
- Professionally engineered roof trusses with hurricane clips and bracing
- IKO dimensional roof shingles with 30-year manufactures warranty
- Hurricane storm panels
- Durable metal garage door
- Therma-Tru[®] embossed insulated fiberglass front door
- Fully sodded home sites with professionally designed landscaping
- Hunter[®] automatic irrigation system
- Paver driveway, entry walkway and patio
- Decorative exterior stone
- Exterior hose bib connection
- Exterior weather proof outlets (G.F.I.)

Heart of the Home

- Knockdown textured finish on walls and ceilings
- Jeld-Wen[®] 2-panel interior doors
- Kwikset[®] satin-nickel keyed entry handleset
- Kwikset[®] satin-nickel interior door levers throughout
- Vinyl-coated ventilated shelving in all closets
- Daltile[®] 18" x 18" ceramic tile flooring in first floor living areas (excluding bedrooms)
- Mohawk[®] luxurious wall-to-wall carpeting (installed over dense padding)
- Sherwin Williams[®] bright white interior paint
- Square style baseboards throughout

A Gourmet's Delight

- Frigidaire[®] Black Appliances
 - 25 cu. ft. side by side refrigerator with ice maker
 - Glass top range with microwave above
 - 24" built-in dishwasher
- Quality-crafted, custom designed cabinets with 30" uppers
- Sterling[®] single-bowl stainless steel sink
- Moen[®] single lever faucet

Thoughtful Details

- Uponor[®] PEX plumbing water lines
- Minimum 50-gallon insulated water heater (per plan)
- Interior washer/dryer hook-up
- Carrier[®] energy efficient central A/C and heating system
- R-30 blown insulation above all air-conditioned living space
- R-11 BATT insulation between interior wall and garage wall
- R-4.1 insulated exterior masonry walls

Bathroom Conveniences

- Adult-height custom designed cabinets
- Full vanity mirrors
- Daltile[®] 12" x 12" ceramic tile floors
- Moen[®] faucets throughout
- Gerber[®] elongated commodes throughout
- Gerber[®] pedestal sink in powder room (per plan)
- Air King[®] Exhaust fans

Technology Standard Features

- Square D[®] surge protection on all major appliances
- Pre-wired for ceiling fans with switches in all bedrooms and great room
- High speed structured wiring for 4-line phone, video and computer, includes Cat-5 data lines and RG-6 quad shield coaxial cable (per plan)
- BRK[®] electrical smoke detectors with battery-backup
- BRK[®] carbon monoxide detector
- Cooper[®] switches and outlets throughout
- Minimum 150-amp electrical panel with circuit breakers

Home Is[™] Connected

- Qolysys IQ Panel II 7" HD Touchscreen with built-in 5MP camera
- Skybell[®] Trim Plus WiFi video doorbell
- Echo Smart[™] & Echo Dot[™] speaker with Alexa
- Z Wave[™] Thermostat
- Z Wave[™] Light Switch
- Z Wave[™] Door Lock
- WiFi enabled garage door opener with two transmitters
- Security System with 1 motion detector and 3 door contacts

D.R. Horton's Personal Touch

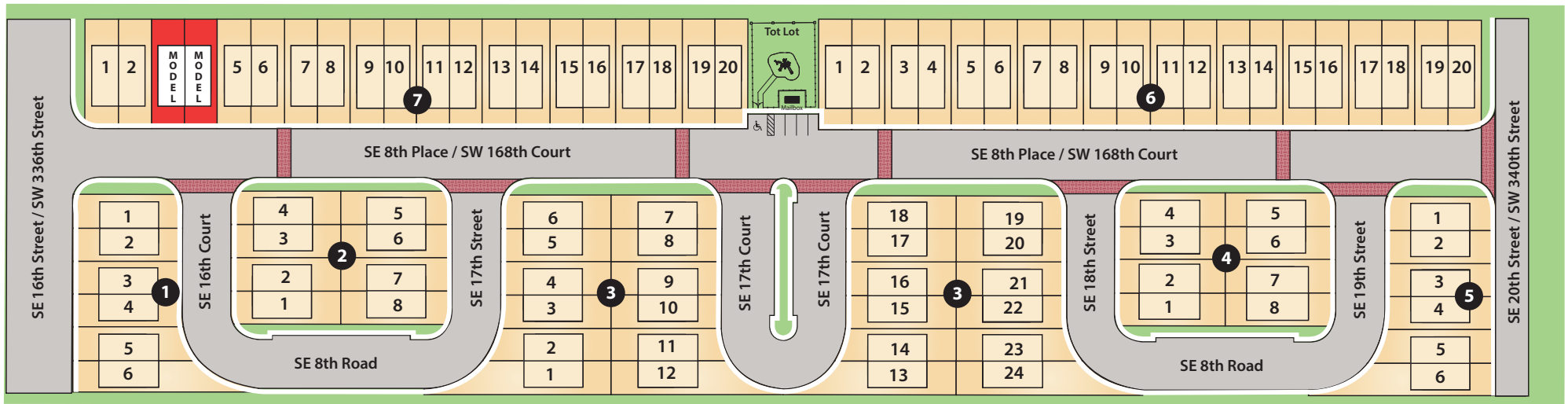
- Personalized New Homeowner Orientation
- D.R. Horton 1-Year Warranty
- 10-Year RWC[™] warranty to protect your investment
- 10-Year Carrier[®] limited warranty
- 3rd party home inspections

Avella Park · 1625 SE 8th Place, Homestead, FL 33034 · (844) 238.0693 · drhorton.com

D.R. Horton is equal housing opportunity builder. Included features subject to change without prior notice or obligation, as a result, please consult with one of our sales representatives for the latest community information. Florida Certified General Contractor #CGC059394

Avella Park

Homestead, FL



Avella Park · 1625 SE 8th Place, Homestead, FL 33034 · (844) 238.0693 · drhorton.com

D.R. Horton is equal housing opportunity builder. This map is a schematic for exhibition purposes only and does not represent the exact location or configuration of site features, lot lines, easements, amenities, units, buildings or details shown thereon. All homesite sizes are approximate and may vary. All information on this map, including availability and delivery dates is subject to change without notice or obligation. Florida Certified General Contractor #CGC059394