

# SKY LOFT

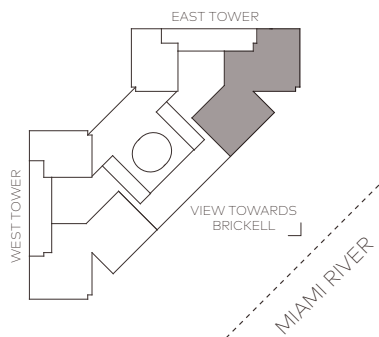


VIEW TOWARDS  
BRICKELL

VIEW TOWARDS  
BISCAYNE BAY

## UNIT A2 4 bedrooms 5 bathrooms

Interior: 5,433ft<sup>2</sup> / 505m<sup>2</sup>  
Terrace: 435ft<sup>2</sup> / 40m<sup>2</sup>  
Total: 5,868ft<sup>2</sup> / 545m<sup>2</sup>



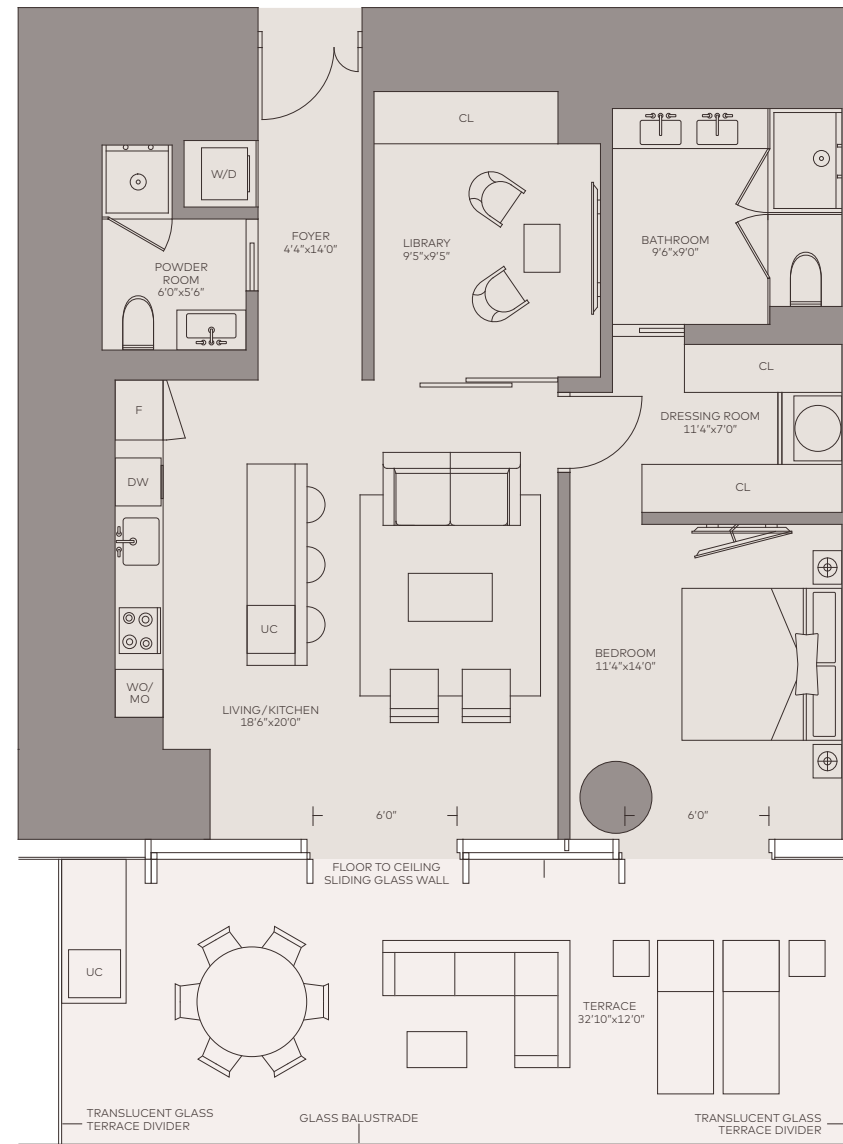
- Private elevator landings
- 10-to-12-foot-plus ceilings
- Expansive bay, river and city skyline views
- 12-foot deep glass enclosed outdoor living terraces
- Open layouts with floor-to-ceiling glass walls
- Honed stone flooring throughout
- Full slab stone finished Spa bathrooms with Dornbracht and TOTO fixtures
- Walk-in rain showers and free-floating bathtubs

- Dressing rooms with European finishes
- European kitchen cabinetry with stone countertops
- Top-of-the-line Miele and Gaggenau appliances
- Vertically vented exhausts
- Pre-wired for smart technology, designer illumination and A/V
- Custom heavy gauge doors and hardware
- Designated Art Wall with task lighting
- Multi-zone climate control integrated with smart-home technology



**ONE RIVER POINT**  
BY RAFAEL VIÑOLY

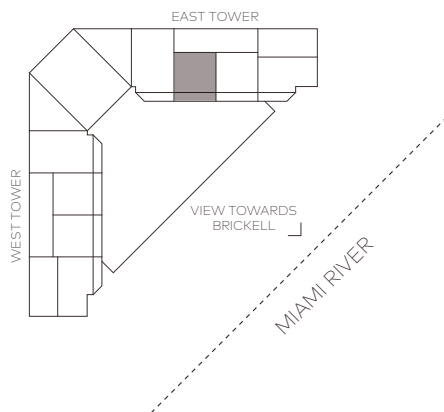
# RESIDENCE



VIEW TOWARDS  
BRICKELL

## UNIT F1 1 bedroom 1.5 bathroom

Interior: 1,095ft<sup>2</sup> / 102m<sup>2</sup>  
Terrace: 395ft<sup>2</sup> / 37m<sup>2</sup>  
Total: 1,490ft<sup>2</sup> / 138m<sup>2</sup>

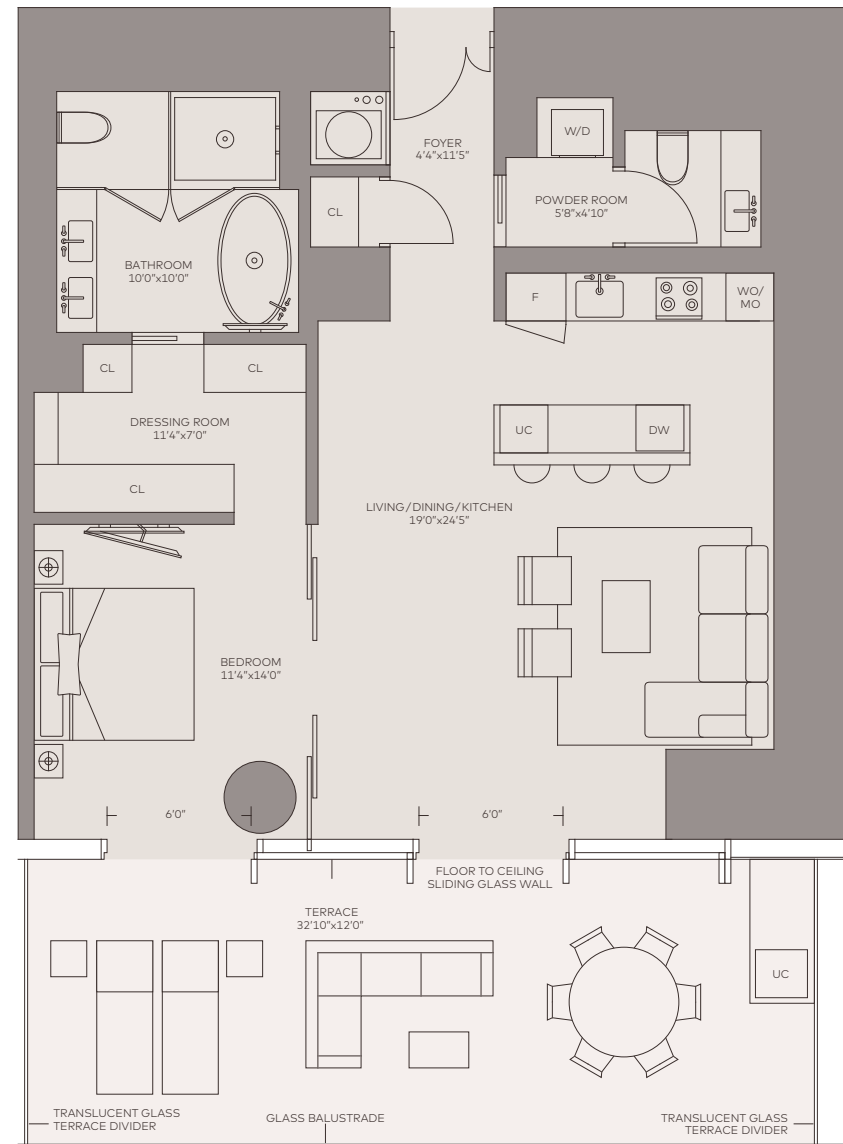


- Private elevator landings
- 10-to-12-foot-plus ceilings
- Expansive bay, river and city skyline views
- 12-foot deep glass enclosed outdoor living terraces
- Open layouts with floor-to-ceiling glass walls
- Honed stone flooring throughout
- Full slab stone finished Spa bathrooms with Dornbracht and TOTO fixtures
- Walk-in rain showers and free-floating bathtubs
- Dressing rooms with European finishes
- European kitchen cabinetry with stone countertops
- Top-of-the-line Miele and Gaggenau appliances
- Vertically vented exhausts
- Pre-wired for smart technology, designer illumination and A/V
- Custom heavy gauge doors and hardware
- Designated Art Wall with task lighting
- Multi-zone climate control integrated with smart-home technology



**ONE RIVER POINT**  
BY RAFAEL VIÑOLY

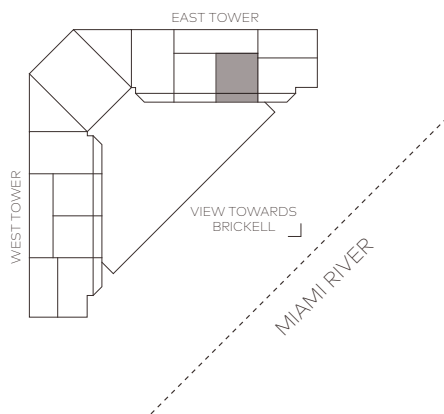
# RESIDENCE



VIEW TOWARDS  
BRICKELL

## UNIT F2 1 bedroom 1.5 bathroom

Interior: 1,095ft<sup>2</sup> / 102m<sup>2</sup>  
Terrace: 395ft<sup>2</sup> / 37m<sup>2</sup>  
Total: 1,490ft<sup>2</sup> / 138m<sup>2</sup>

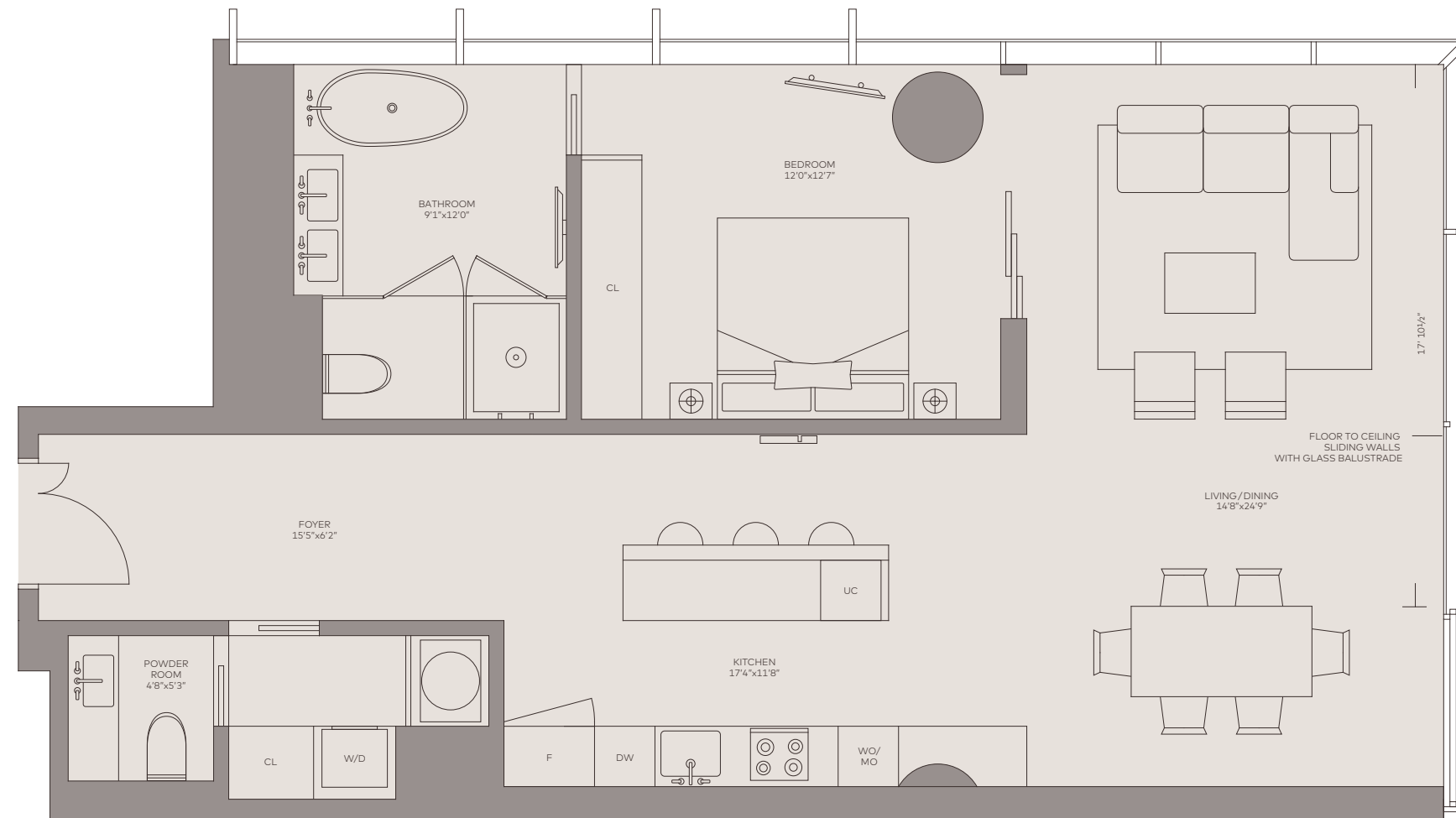


- Private elevator landings
- 10-to-12-foot-plus ceilings
- Expansive bay, river and city skyline views
- 12-foot deep glass enclosed outdoor living terraces
- Open layouts with floor-to-ceiling glass walls
- Honed stone flooring throughout
- Full slab stone finished Spa bathrooms with Dornbracht and TOTO fixtures
- Walk-in rain showers and free-floating bathtubs
- Dressing rooms with European finishes
- European kitchen cabinetry with stone countertops
- Top-of-the-line Miele and Gaggenau appliances
- Vertically vented exhausts
- Pre-wired for smart technology, designer illumination and A/V
- Custom heavy gauge doors and hardware
- Designated Art Wall with task lighting
- Multi-zone climate control integrated with smart-home technology



**ONE RIVER POINT**  
BY RAFAEL VIÑOLY

# RESIDENCE

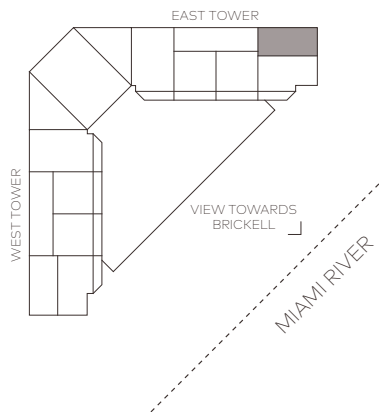


VIEW TOWARDS BISCAYNE BAY >

VIEW TOWARDS BRICKELL >

**UNIT F3**  
 1 bedroom  
 1.5 bathroom

Total: 1,110ft<sup>2</sup> / 103m<sup>2</sup>

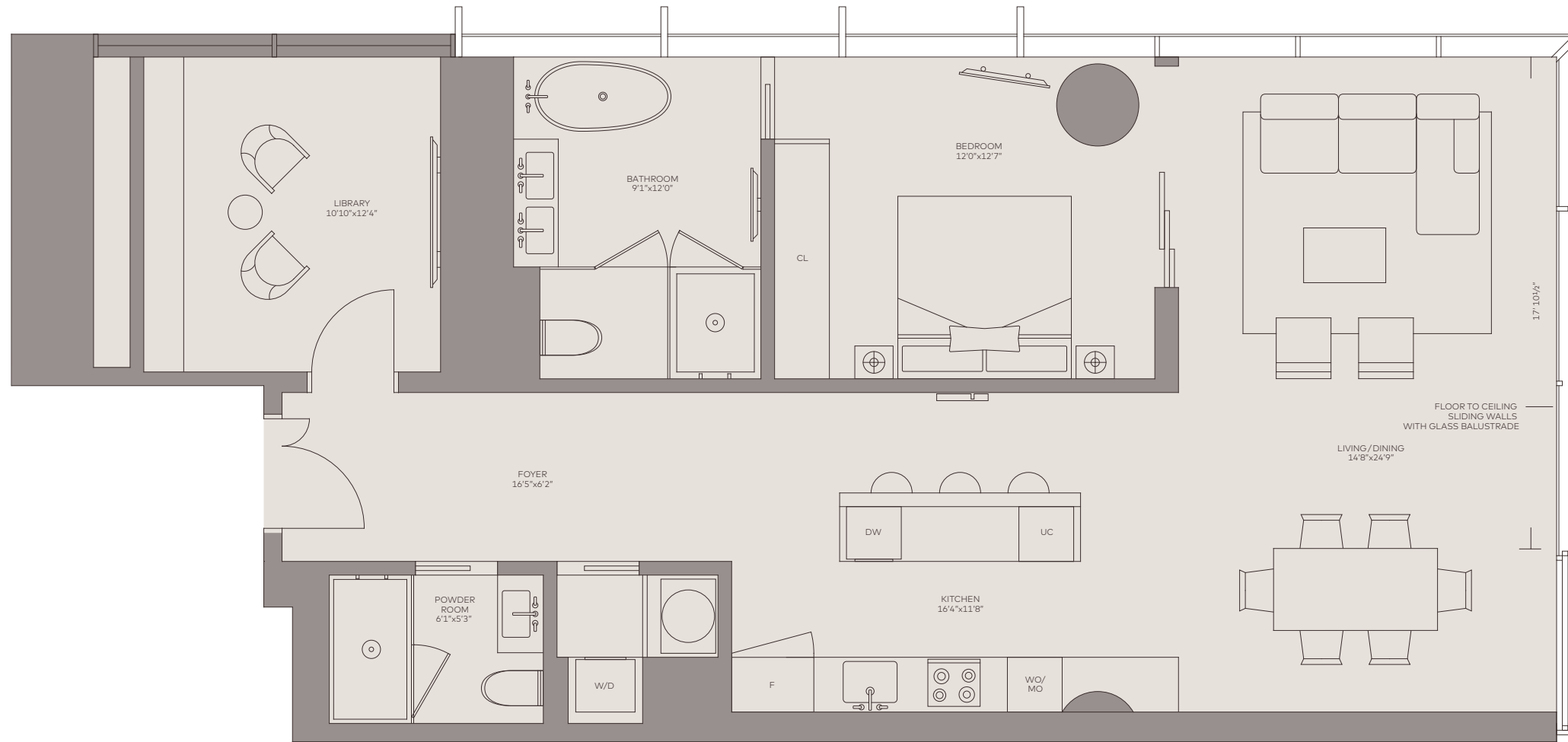


- Private elevator landings
- 10-to-12-foot-plus ceilings
- Expansive bay, river and city skyline views
- 12-foot deep glass enclosed outdoor living terraces
- Open layouts with floor-to-ceiling glass walls
- Honed stone flooring throughout
- Full slab stone finished Spa bathrooms with Dornbracht and TOTO fixtures
- Walk-in rain showers and free-floating bathtubs
- Dressing rooms with European finishes
- European kitchen cabinetry with stone countertops
- Top-of-the-line Miele and Gaggenau appliances
- Vertically vented exhausts
- Pre-wired for smart technology, designer illumination and A/V
- Custom heavy gauge doors and hardware
- Designated Art Wall with task lighting
- Multi-zone climate control integrated with smart-home technology



**ONE RIVER POINT**  
 BY RAFAEL VIÑOLY

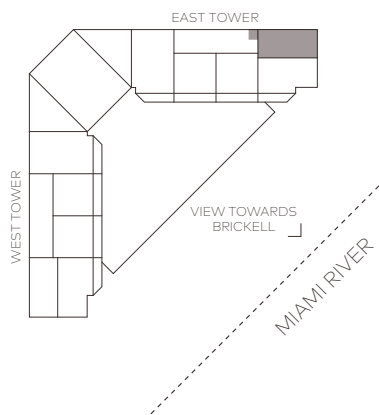
# RESIDENCE



VIEW TOWARDS  
BISCAYNE BAY >

VIEW TOWARDS  
BRICKELL <

UNIT F3 A  
1 bedroom  
1.5 bathroom  
Total: 1,254ft<sup>2</sup> / 117m<sup>2</sup>

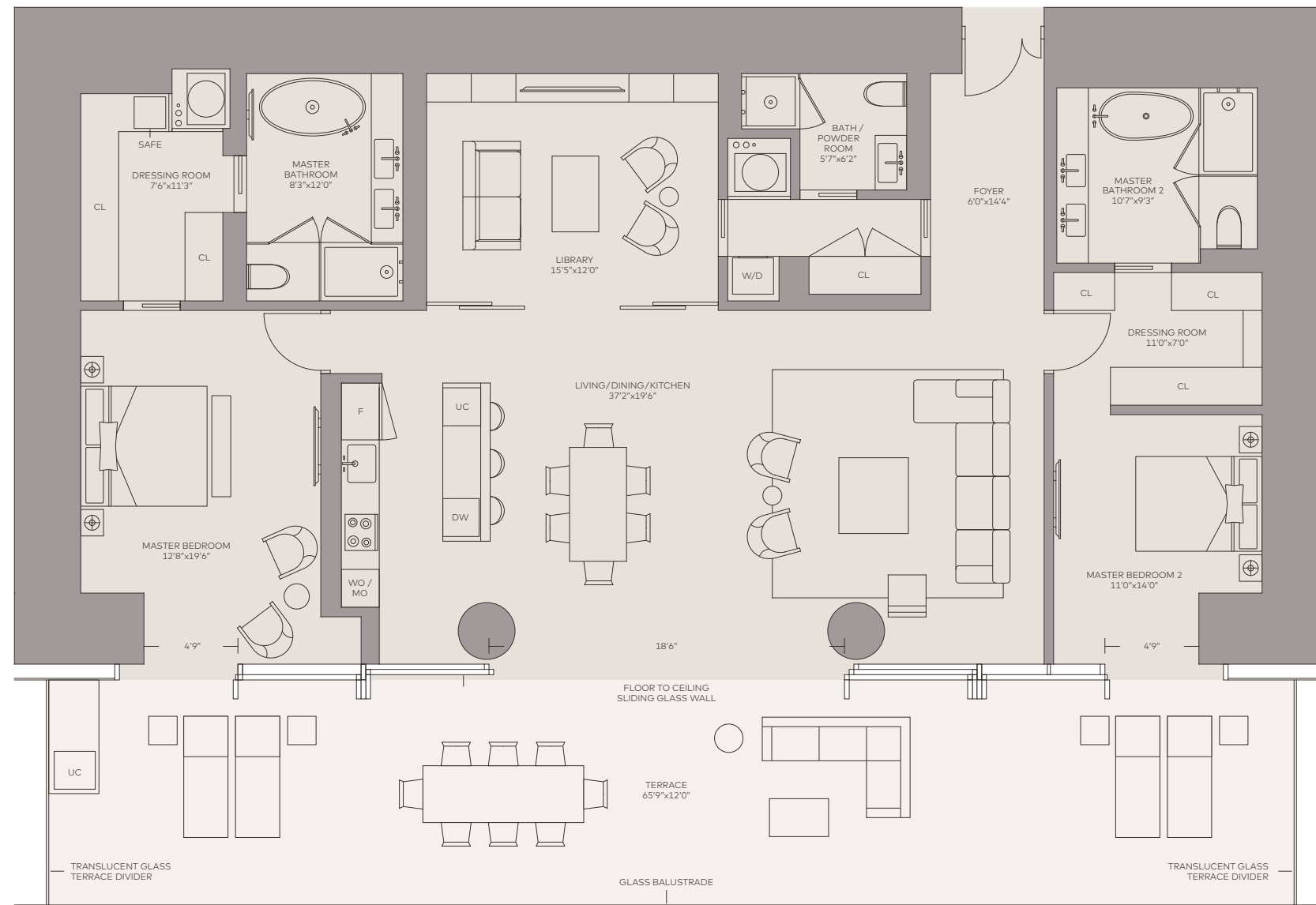


- Private elevator landings
- 10-to-12-foot-plus ceilings
- Expansive bay, river and city skyline views
- 12-foot deep glass enclosed outdoor living terraces
- Open layouts with floor-to-ceiling glass walls
- Honed stone flooring throughout
- Full slab stone finished Spa bathrooms with Dornbracht and TOTO fixtures
- Walk-in rain showers and free-floating bathtubs
- Dressing rooms with European finishes
- European kitchen cabinetry with stone countertops
- Top-of-the-line Miele and Gaggenau appliances
- Vertically vented exhausts
- Pre-wired for smart technology, designer illumination and A/V
- Custom heavy gauge doors and hardware
- Designated Art Wall with task lighting
- Multi-zone climate control integrated with smart-home technology



**ONE RIVER POINT**  
BY RAFAEL VIÑOLY

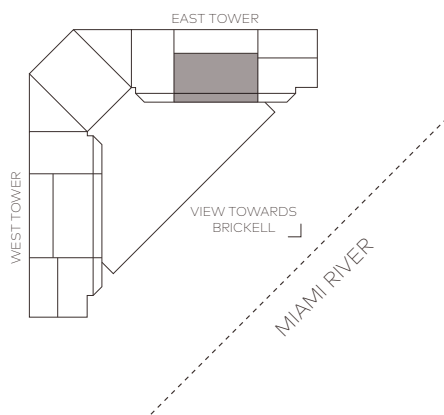
# RESIDENCE



VIEW TOWARDS  
BRICKELL

## UNIT E1 2 bedrooms 3 bathrooms

Interior: 2,187ft<sup>2</sup> / 203m<sup>2</sup>  
Terrace: 790ft<sup>2</sup> / 73m<sup>2</sup>  
Total: 2,977ft<sup>2</sup> / 277m<sup>2</sup>



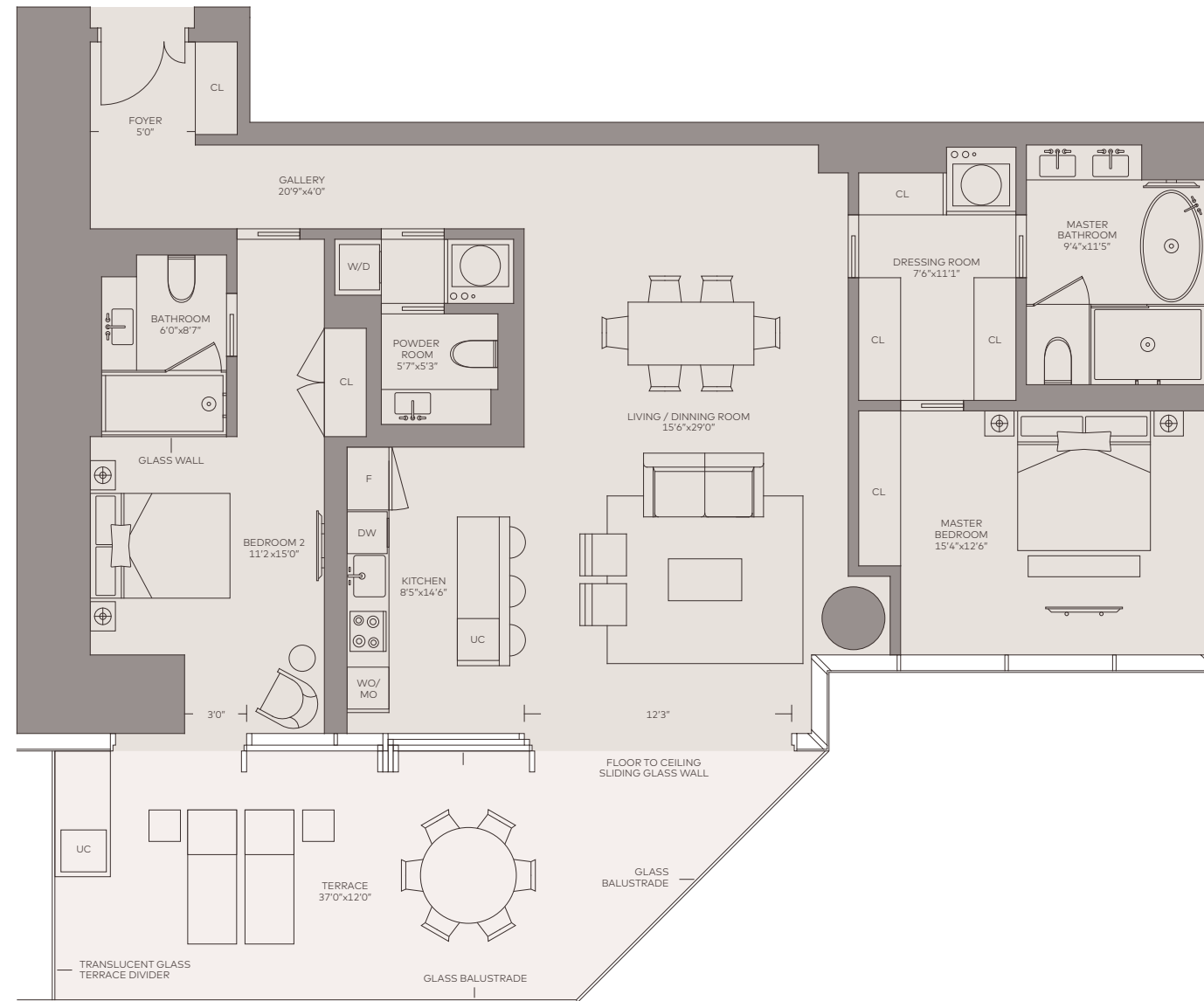
- Private elevator landings
- 10-to-12-foot-plus ceilings
- Expansive bay, river and city skyline views
- 12-foot deep glass enclosed outdoor living terraces
- Open layouts with floor-to-ceiling glass walls
- Honed stone flooring throughout
- Full slab stone finished Spa bathrooms with Dornbracht and TOTO fixtures
- Walk-in rain showers and free-floating bathtubs

- Dressing rooms with European finishes
- European kitchen cabinetry with stone countertops
- Top-of-the-line Miele and Gaggenau appliances
- Vertically vented exhausts
- Pre-wired for smart technology, designer illumination and A/V
- Custom heavy gauge doors and hardware
- Designated Art Wall with task lighting
- Multi-zone climate control integrated with smart-home technology



**ONE RIVER POINT**  
BY RAFAEL VIÑOLY

# RESIDENCE

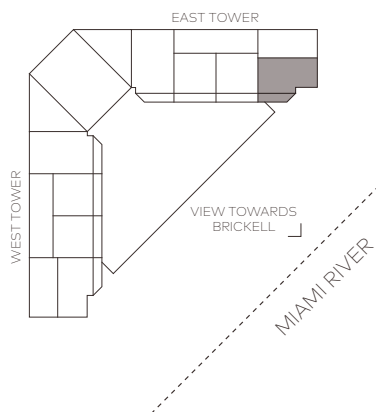


VIEW TOWARDS  
BISCAYNE BAY ➤

VIEW TOWARDS  
BRICKELL ↙

## UNIT E2 2 bedrooms 2.5 bathrooms

Interior: 1,599ft<sup>2</sup> / 149m<sup>2</sup>  
Terrace: 372ft<sup>2</sup> / 35m<sup>2</sup>  
Total: 1,971ft<sup>2</sup> / 183m<sup>2</sup>

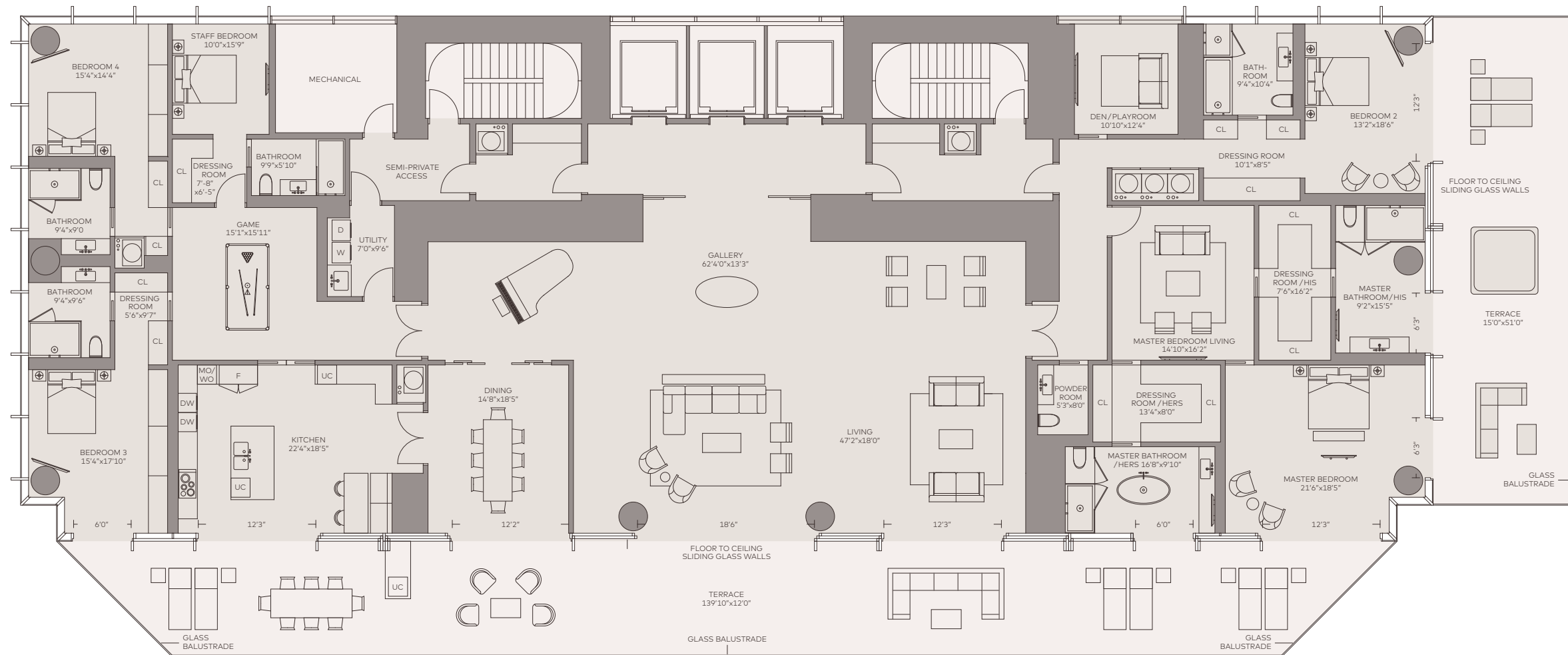


- Private elevator landings
- 10-to-12-foot-plus ceilings
- Expansive bay, river and city skyline views
- 12-foot deep glass enclosed outdoor living terraces
- Open layouts with floor-to-ceiling glass walls
- Honed stone flooring throughout
- Full slab stone finished Spa bathrooms with Dornbracht and TOTO fixtures
- Walk-in rain showers and free-floating bathtubs
- Dressing rooms with European finishes
- European kitchen cabinetry with stone countertops
- Top-of-the-line Miele and Gaggenau appliances
- Vertically vented exhausts
- Pre-wired for smart technology, designer illumination and A/V
- Custom heavy gauge doors and hardware
- Designated Art Wall with task lighting
- Multi-zone climate control integrated with smart-home technology



**ONE RIVER POINT**  
BY RAFAEL VIÑOLY

# PENTHOUSE

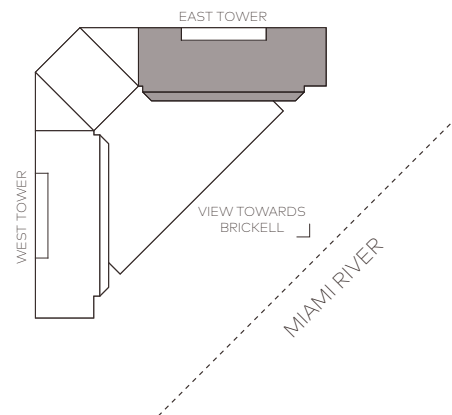


VIEW TOWARDS  
BISCAYNE BAY

VIEW TOWARDS  
BRICKELL

**UNIT A3**  
5 bedrooms  
6 bathrooms

Interior: 7,033ft<sup>2</sup> / 653m<sup>2</sup>  
Terrace: 2,299ft<sup>2</sup> / 214m<sup>2</sup>  
Total: 9,332ft<sup>2</sup> / 867m<sup>2</sup>



- Private elevator landings
- 10-to-12-foot-plus ceilings
- Expansive bay, river and city skyline views
- 12-foot deep glass enclosed outdoor living terraces
- Open layouts with floor-to-ceiling glass walls
- Honed stone flooring throughout
- Full slab stone finished Spa bathrooms with Dornbracht and TOTO fixtures
- Walk-in rain showers and free-floating bathtubs

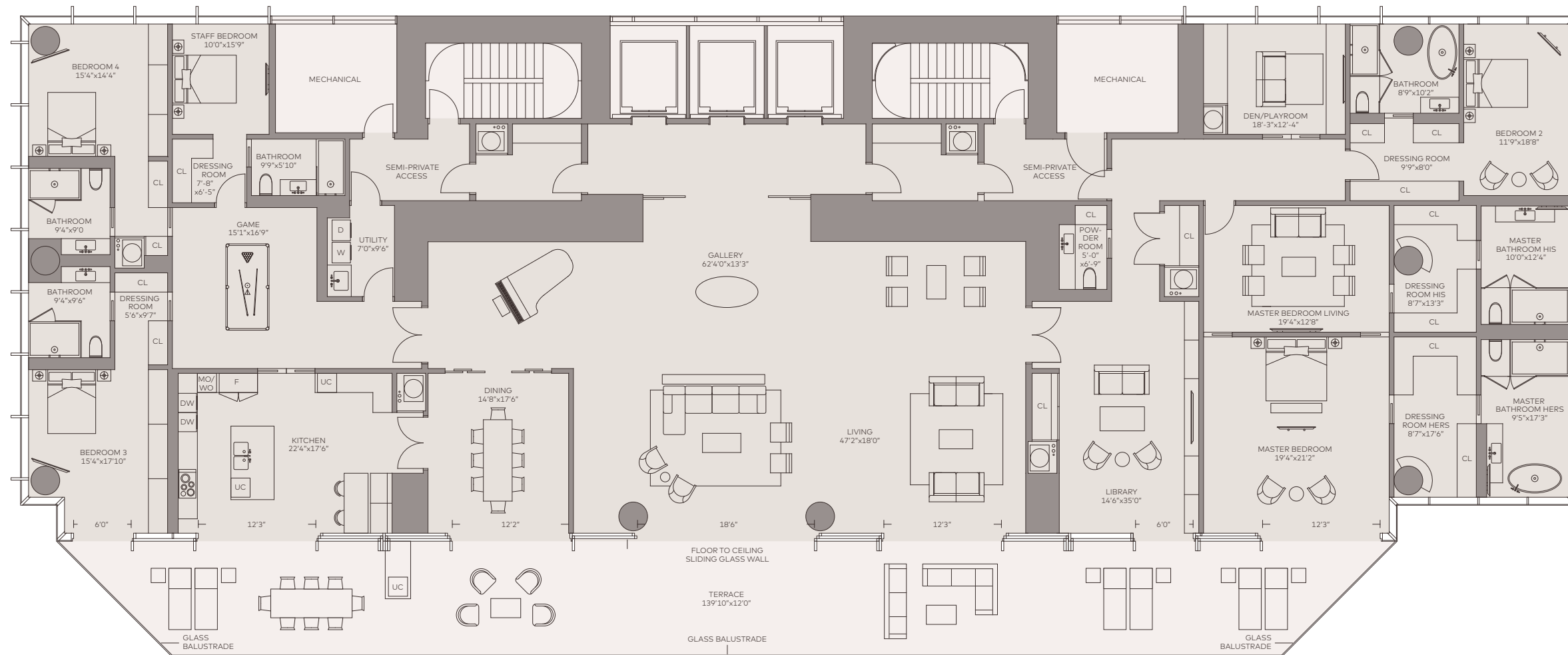
- Dressing rooms with European finishes
- European kitchen cabinetry with stone countertops
- Top-of-the-line Miele and Gaggenau appliances
- Vertically vented exhausts
- Pre-wired for smart technology, designer illumination and A/V
- Custom heavy gauge doors and hardware
- Designated Art Wall with task lighting
- Multi-zone climate control integrated with smart-home technology



**ONE RIVER POINT**  
BY RAFAEL VIÑOLY



# PENTHOUSE



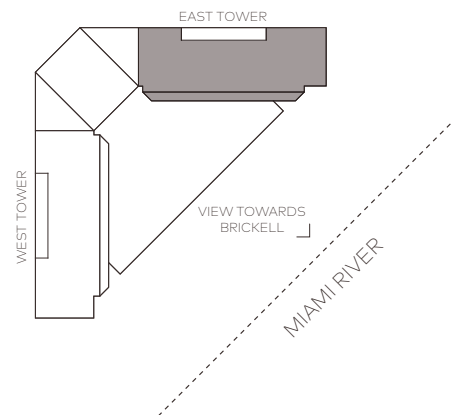
VIEW TOWARDS  
BISCAYNE BAY

VIEW TOWARDS  
BRICKELL

## UNIT A4

5 bedrooms  
6 bathrooms

Interior: 7,658ft<sup>2</sup> / 711m<sup>2</sup>  
Terrace: 1,534ft<sup>2</sup> / 143m<sup>2</sup>  
Total: 9,192ft<sup>2</sup> / 854m<sup>2</sup>



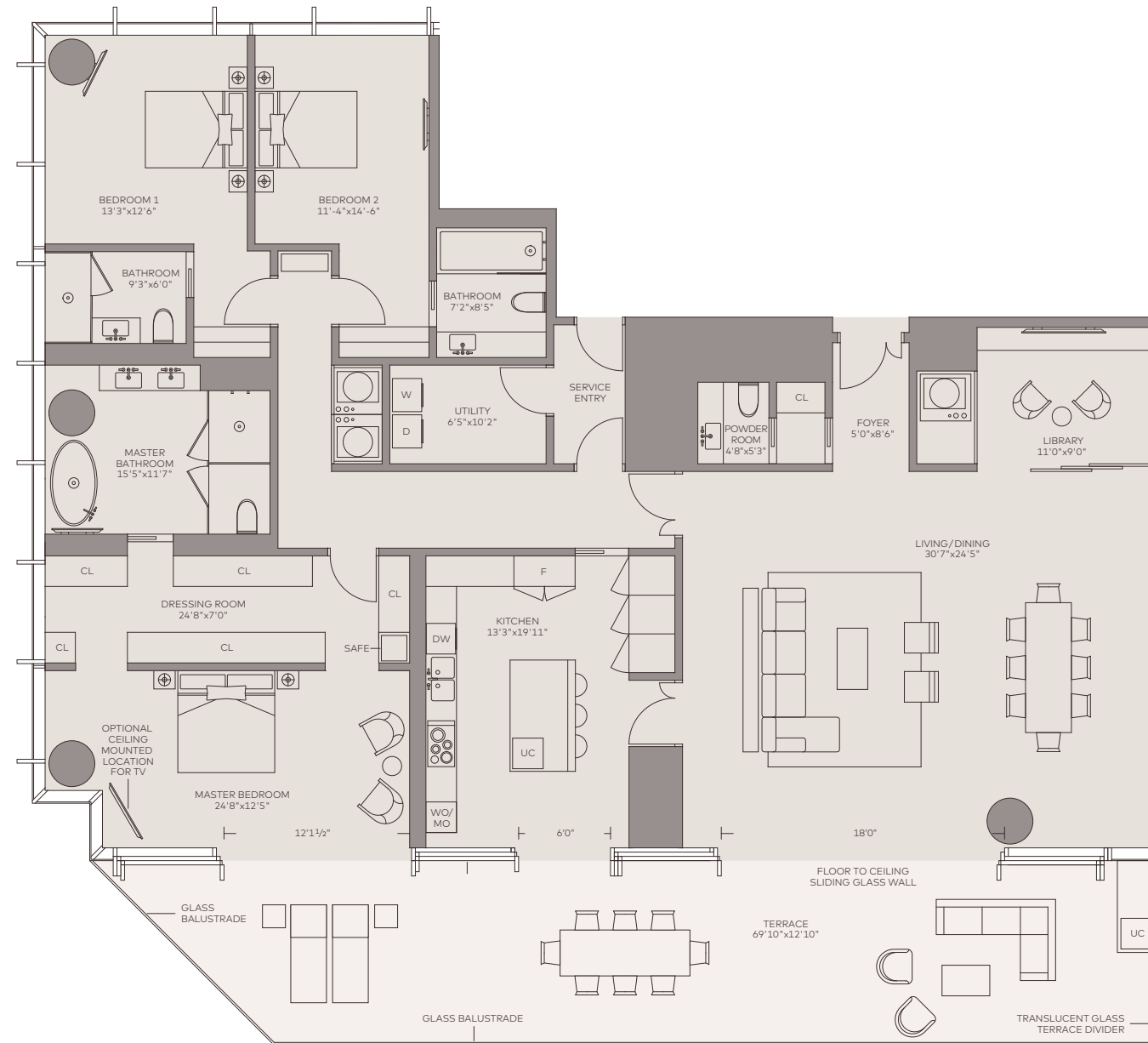
- Private elevator landings
- 10-to-12-foot-plus ceilings
- Expansive bay, river and city skyline views
- 12-foot deep glass enclosed outdoor living terraces
- Open layouts with floor-to-ceiling glass walls
- Honed stone flooring throughout
- Full slab stone finished Spa bathrooms with Dornbracht and TOTO fixtures
- Walk-in rain showers and free-floating bathtubs

- Dressing rooms with European finishes
- European kitchen cabinetry with stone countertops
- Top-of-the-line Miele and Gaggenau appliances
- Vertically vented exhausts
- Pre-wired for smart technology, designer illumination and A/V
- Custom heavy gauge doors and hardware
- Designated Art Wall with task lighting
- Multi-zone climate control integrated with smart-home technology



**ONE RIVER POINT**  
BY RAFAEL VIÑOLY

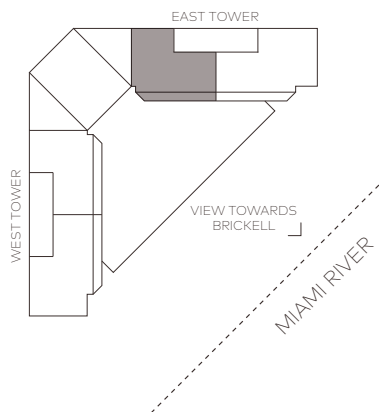
# RESIDENCE



VIEW TOWARDS  
BRICKELL

## UNIT B1 3 bedroom 3.5 bathroom

Interior: 3,078ft<sup>2</sup> / 286m<sup>2</sup>  
Terrace: 767ft<sup>2</sup> / 71m<sup>2</sup>  
Total: 3,845ft<sup>2</sup> / 357m<sup>2</sup>



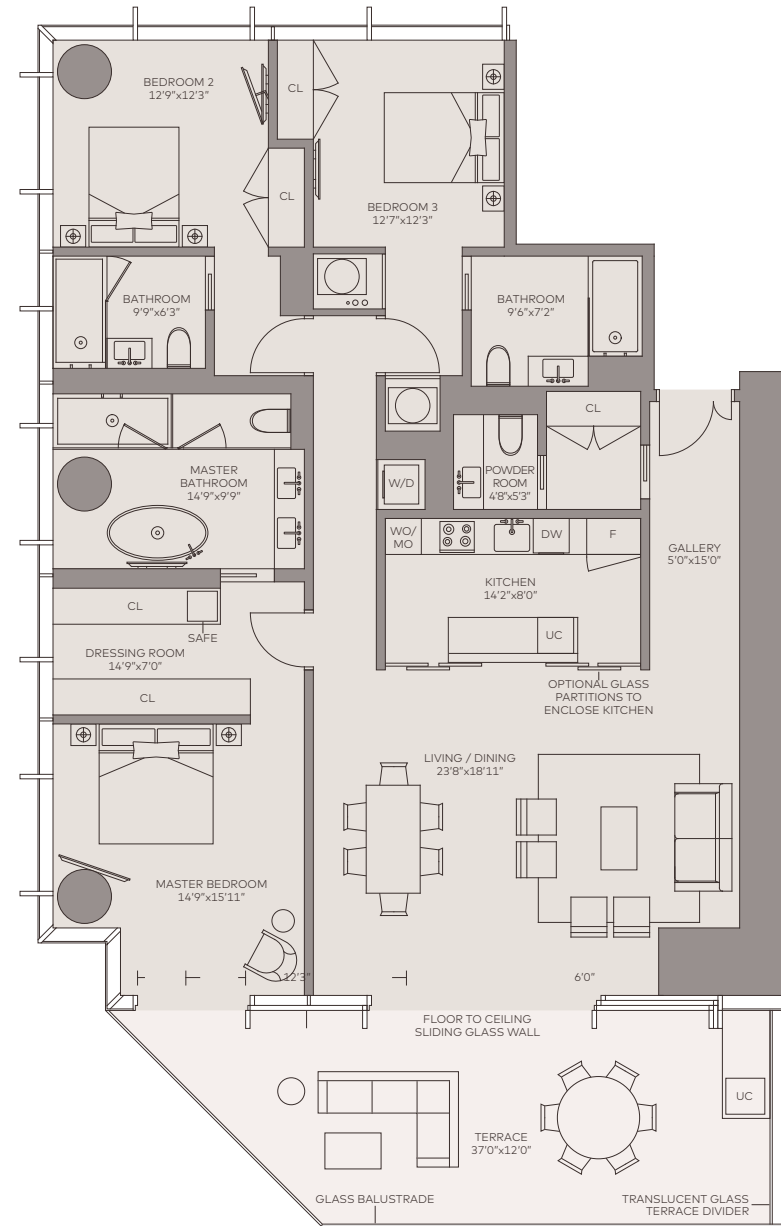
- Private elevator landings
- 10-to-12-foot-plus ceilings
- Expansive bay, river and city skyline views
- 12-foot deep glass enclosed outdoor living terraces
- Open layouts with floor-to-ceiling glass walls
- Honed stone flooring throughout
- Full slab stone finished Spa bathrooms with Dornbracht and TOTO fixtures
- Walk-in rain showers and free-floating bathtubs

- Dressing rooms with European finishes
- European kitchen cabinetry with stone countertops
- Top-of-the-line Miele and Gaggenau appliances
- Vertically vented exhausts
- Pre-wired for smart technology, designer illumination and A/V
- Custom heavy gauge doors and hardware
- Designated Art Wall with task lighting
- Multi-zone climate control integrated with smart-home technology



**ONE RIVER POINT**  
BY RAFAEL VIÑOLY

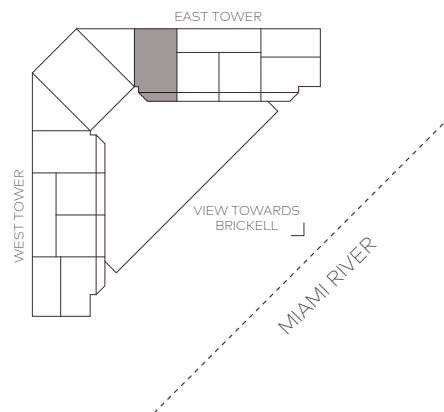
# RESIDENCE



VIEW TOWARDS  
BRICKELL

## UNIT D1 3 bedroom 3.5 bathroom

Interior: 1,971ft<sup>2</sup> / 183m<sup>2</sup>  
Terrace: 372ft<sup>2</sup> / 35m<sup>2</sup>  
Total: 2,343ft<sup>2</sup> / 218m<sup>2</sup>



- Private elevator landings
- 10-to-12-foot-plus ceilings
- Expansive bay, river and city skyline views
- 12-foot deep glass enclosed outdoor living terraces
- Open layouts with floor-to-ceiling glass walls
- Honed stone flooring throughout
- Full slab stone finished Spa bathrooms with Dornbracht and TOTO fixtures
- Walk-in rain showers and free-floating bathtubs
- Dressing rooms with European finishes
- European kitchen cabinetry with stone countertops
- Top-of-the-line Miele and Gaggenau appliances
- Vertically vented exhausts
- Pre-wired for smart technology, designer illumination and A/V
- Custom heavy gauge doors and hardware
- Designated Art Wall with task lighting
- Multi-zone climate control integrated with smart-home technology



**ONE RIVER POINT**  
BY RAFAEL VIÑOLY

# RESIDENCE

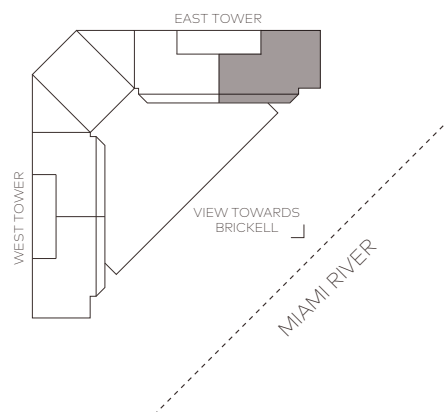


VIEW TOWARDS  
BISCAYNE BAY ➤

VIEW TOWARDS  
BRICKELL ↙

## UNIT B2 4 bedroom 4.5 bathroom

Interior: 3,820ft<sup>2</sup> / 355m<sup>2</sup>  
Terrace: 767ft<sup>2</sup> / 71m<sup>2</sup>  
Total: 4,587ft<sup>2</sup> / 426m<sup>2</sup>



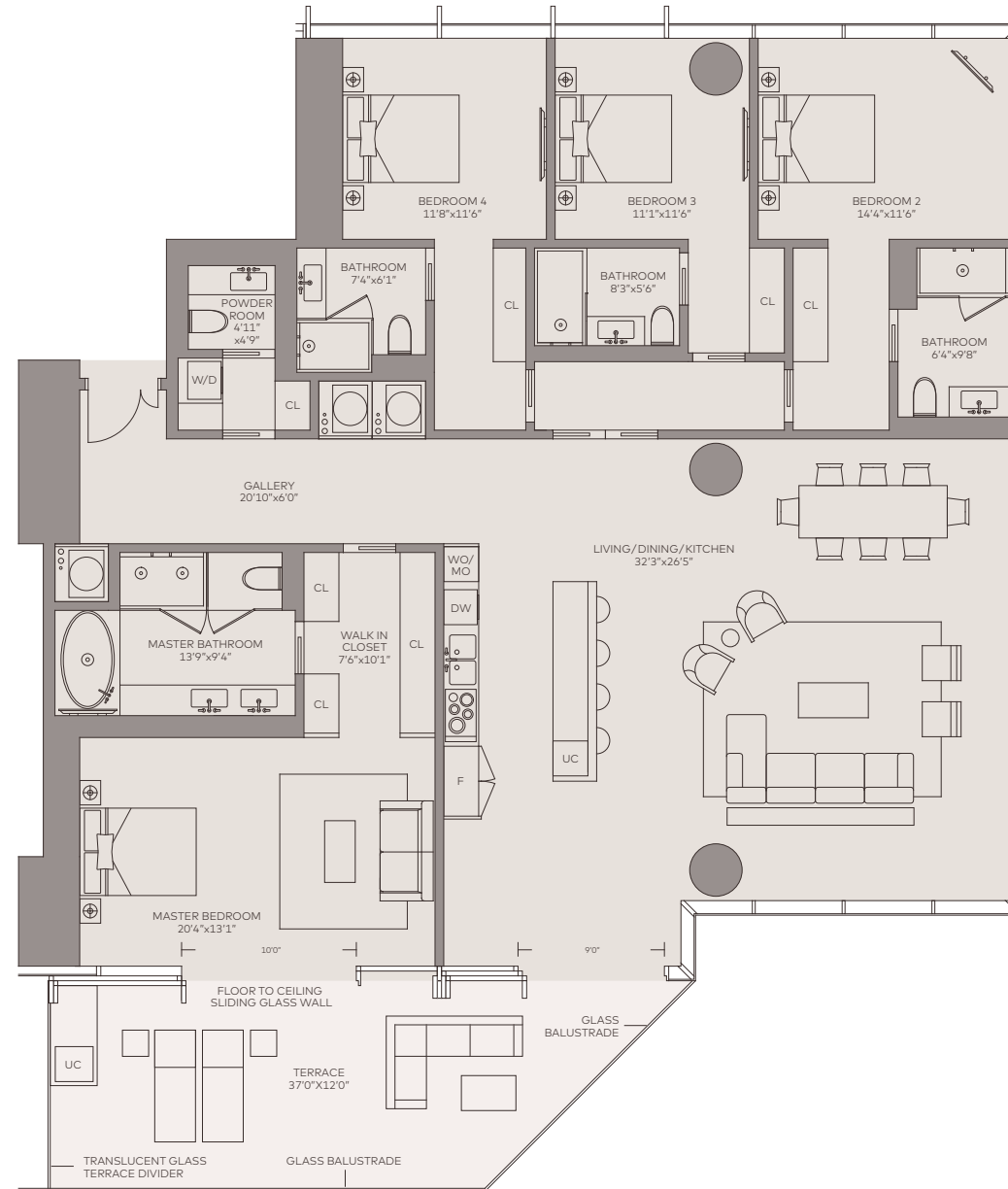
- Private elevator landings
- 10-to-12-foot-plus ceilings
- Expansive bay, river and city skyline views
- 12-foot deep glass enclosed outdoor living terraces
- Open layouts with floor-to-ceiling glass walls
- Honed stone flooring throughout
- Full slab stone finished Spa bathrooms with Dornbracht and TOTO fixtures
- Walk-in rain showers and free-floating bathtubs

- Dressing rooms with European finishes
- European kitchen cabinetry with stone countertops
- Top-of-the-line Miele and Gaggenau appliances
- Vertically vented exhausts
- Pre-wired for smart technology, designer illumination and A/V
- Custom heavy gauge doors and hardware
- Designated Art Wall with task lighting
- Multi-zone climate control integrated with smart-home technology



**ONE RIVER POINT**  
BY RAFAEL VIÑOLY

# RESIDENCE

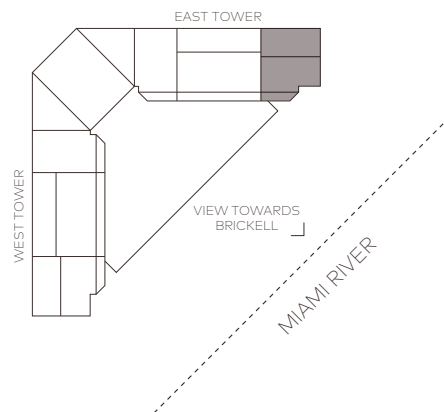


VIEW TOWARDS  
BISCAYNE BAY ➤

VIEW TOWARDS  
BRICKELL ↙

## UNIT C1 4 bedroom 4.5 bathroom

Interior: 2,713ft<sup>2</sup> / 252m<sup>2</sup>  
Terrace: 372ft<sup>2</sup> / 35m<sup>2</sup>  
Total: 3,085ft<sup>2</sup> / 287m<sup>2</sup>



- Private elevator landings
- 10-to-12-foot-plus ceilings
- Expansive bay, river and city skyline views
- 12-foot deep glass enclosed outdoor living terraces
- Open layouts with floor-to-ceiling glass walls
- Honed stone flooring throughout
- Full slab stone finished Spa bathrooms with Dornbracht and TOTO fixtures
- Walk-in rain showers and free-floating bathtubs
- Dressing rooms with European finishes
- European kitchen cabinetry with stone countertops
- Top-of-the-line Miele and Gaggenau appliances
- Vertically vented exhausts
- Pre-wired for smart technology, designer illumination and A/V
- Custom heavy gauge doors and hardware
- Designated Art Wall with task lighting
- Multi-zone climate control integrated with smart-home technology



**ONE RIVER POINT**  
BY RAFAEL VIÑOLY

# RESIDENCE



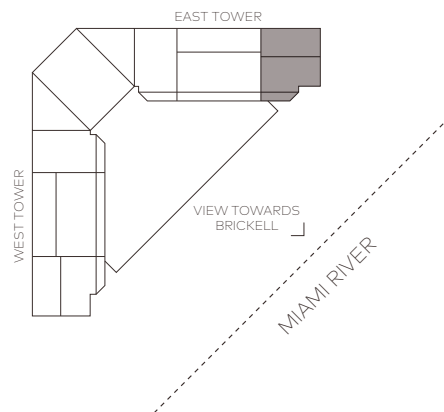
VIEW TOWARDS  
BISCAYNE BAY ➤

VIEW TOWARDS  
BRICKELL ↙

## UNIT C1A

4 bedroom  
4.5 bathroom

Interior: 2,919ft<sup>2</sup> / 271m<sup>2</sup>  
Terrace: 372ft<sup>2</sup> / 35m<sup>2</sup>  
Total: 3,291ft<sup>2</sup> / 306m<sup>2</sup>



- Private elevator landings
- 10-to-12-foot-plus ceilings
- Expansive bay, river and city skyline views
- 12-foot deep glass enclosed outdoor living terraces
- Open layouts with floor-to-ceiling glass walls
- Honed stone flooring throughout
- Full slab stone finished Spa bathrooms with Dornbracht and TOTO fixtures
- Walk-in rain showers and free-floating bathtubs
- Dressing rooms with European finishes
- European kitchen cabinetry with stone countertops
- Top-of-the-line Miele and Gaggenau appliances
- Vertically vented exhausts
- Pre-wired for smart technology, designer illumination and A/V
- Custom heavy gauge doors and hardware
- Designated Art Wall with task lighting
- Multi-zone climate control integrated with smart-home technology



**ONE RIVER POINT**  
BY RAFAEL VIÑOLY