



The Enclaves at Woodmont
954-371-0896 | pulte.com/enclaves
7910 NW 79th Terrace, Tamarac, FL 33321



Please turn phone sideways for best viewing experience

TABLE OF CONTENTS

Click items below to proceed to page

- **Homesite Map**
- **Community Amenities**
- **Home Designs**
- **Included Features**
- **Our Commitment to Quality**
- **Pulte Smart Home**
- **Pulte Homes Warranty**





What's

Included:



15,000 sq. ft. Clubhouse



Resort-Style Pool



Fitness Center



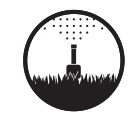
Tennis Courts



Afternoon Golf



Personal Lawn Maintenance



Irrigation Maintenance and Repair



Professional Property Management



Artist's Conception: This drawing is conceptual only and should not be relied upon as representations, express or implied, of the final detail. The developer expressly reserves the right to make modifications, revision, and changes which it deems desirable in its sole and absolute discretion. Community improvements and recreational features and amenities described are based upon current development plans which are subject to change and which are under no obligation to be completed. Community Association fees required. Details available upon request. All information herein is subject to change without notice. © 2020 Pulte Home Company, LLC. CBC057850 1-21-20



SUMMERWOOD

1,851-2,165 A/C Sq. Ft.
2-3 Bedrooms | 2 Baths

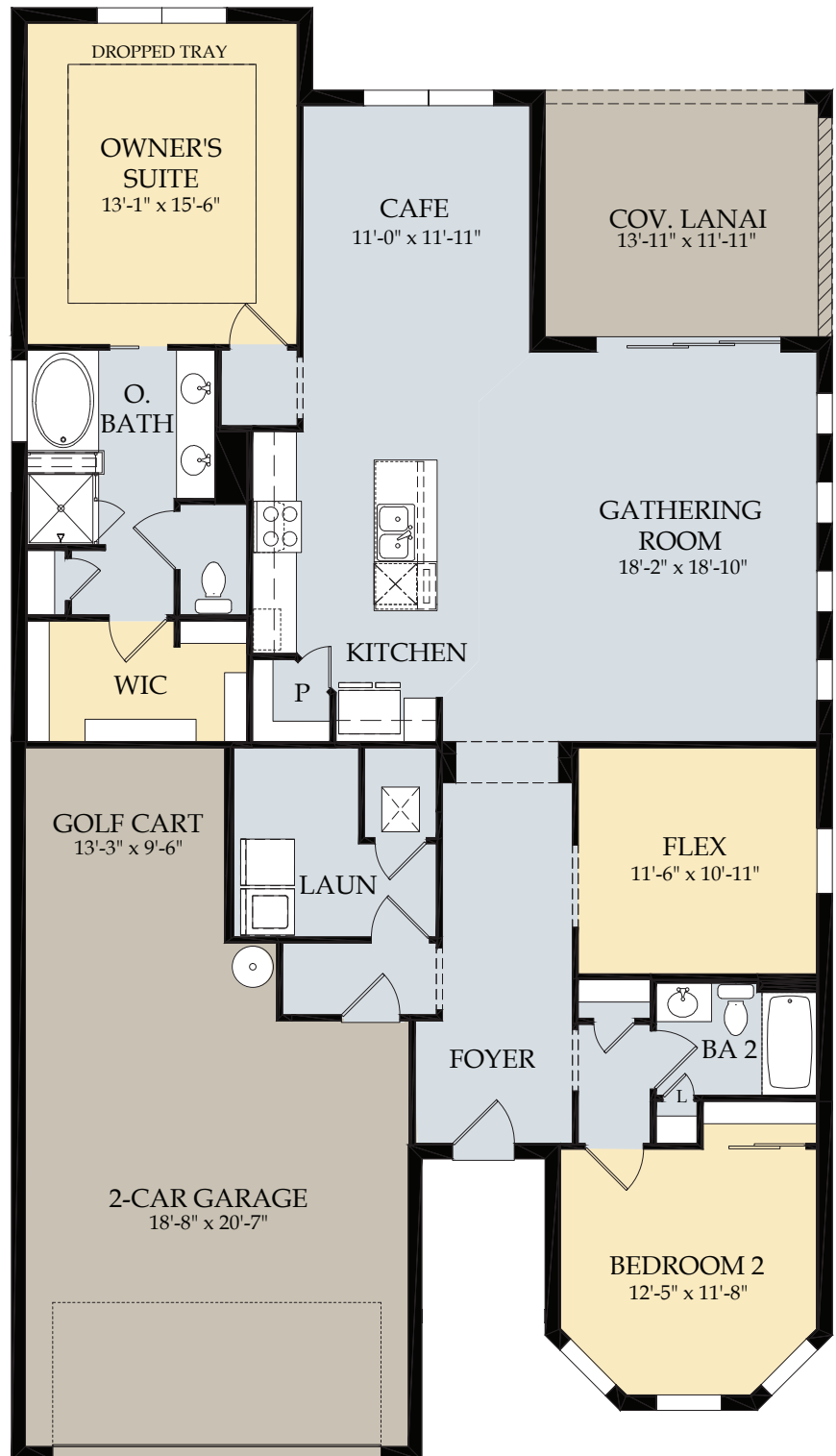
Package A



Home Exterior FM2B

Click to View:

- [Webpage](#)
- [Interactive Floor Plan](#)
- [Virtual Reality Tour](#)
- [Video](#)



7910 NW 79th Terrace, Tamarac, FL 33321 | 954-371-0896 | pulte.com/enclaves

ENCLAVES AT WOODMONT

SUMMERWOOD

Package B



Home Exterior FM2B

Package C

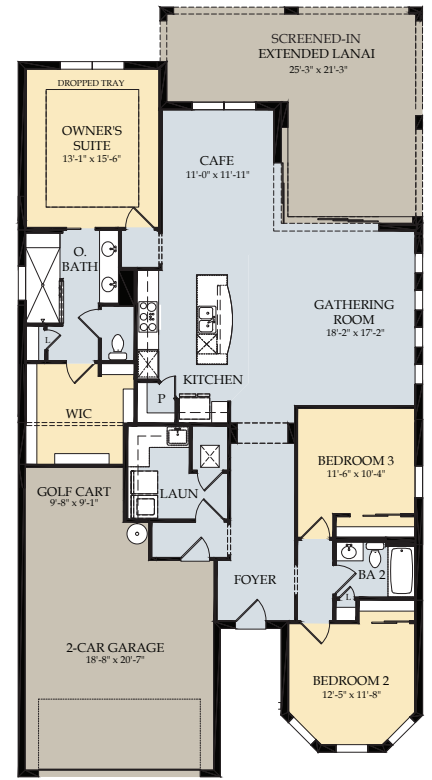
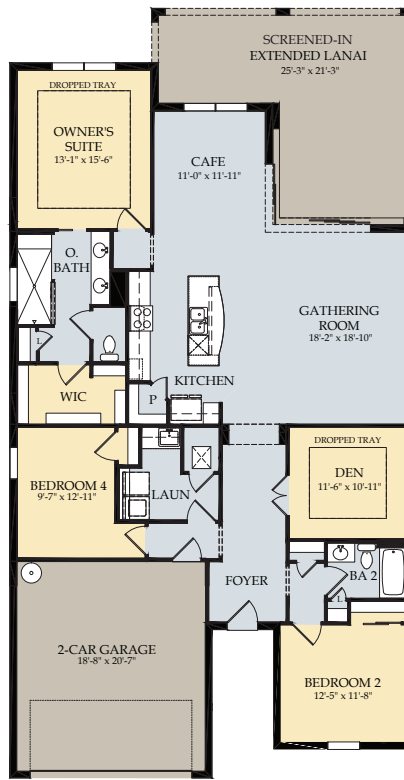
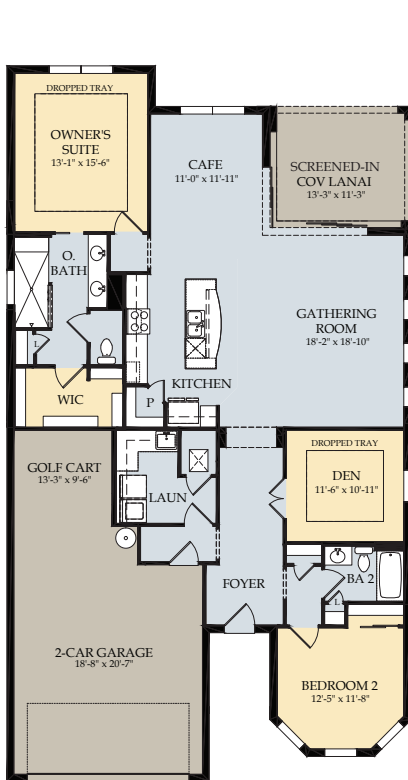


Home Exterior FM3A

Package D



Home Exterior FM2B



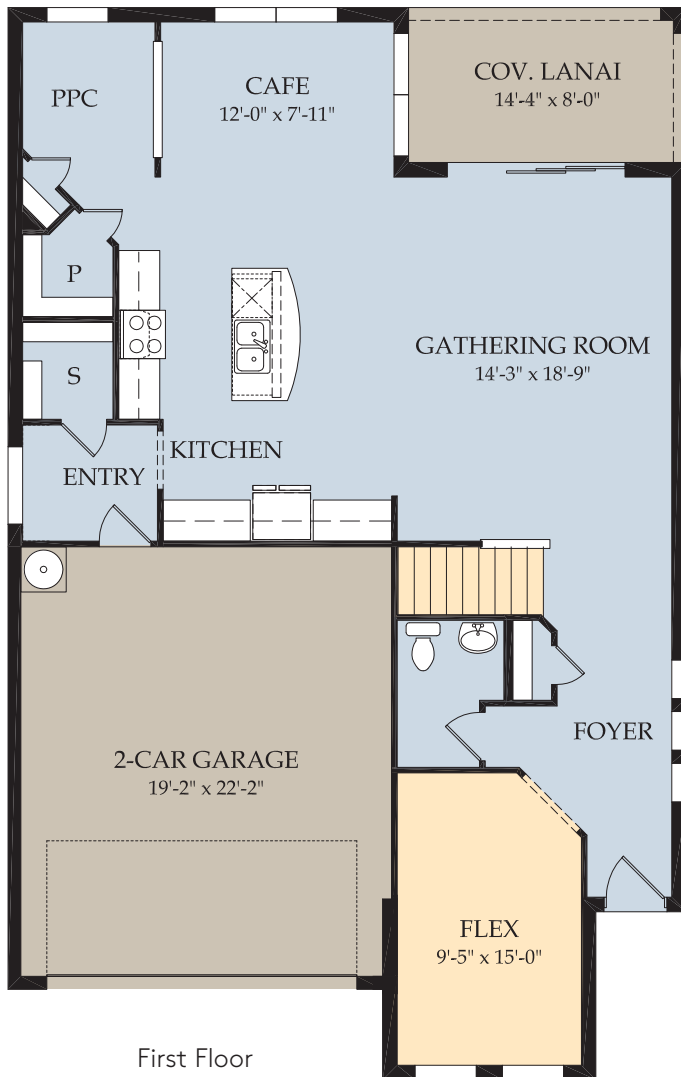
RIVERWALK

2,679 A/C Sq. Ft.
4-5 Bedrooms | 2.5-3.5 Baths

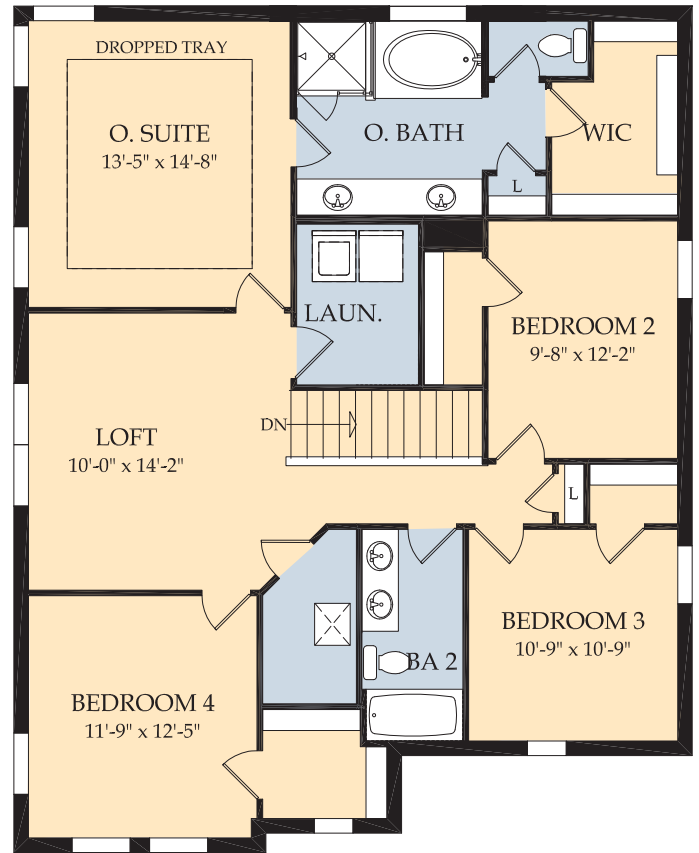
Package A



Home Exterior FMIC



First Floor



Second Floor

Click to View:

- [Webpage](#)
- [Interactive Floor Plan](#)
- [Video](#)



7910 NW 79th Terrace, Tamarac, FL 33321 | 954-371-0896 | pulte.com/enclaves

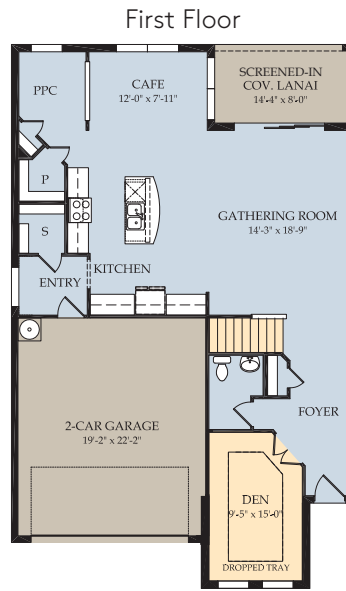
ENCLAVES AT WOODMONT

RIVERWALK

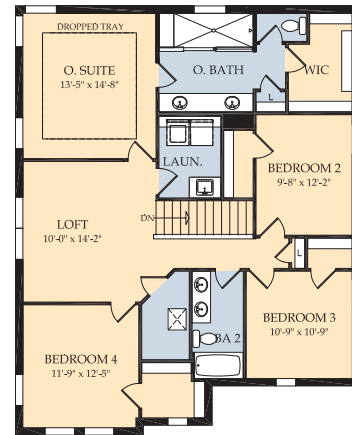
Package B



Home Exterior FM2B



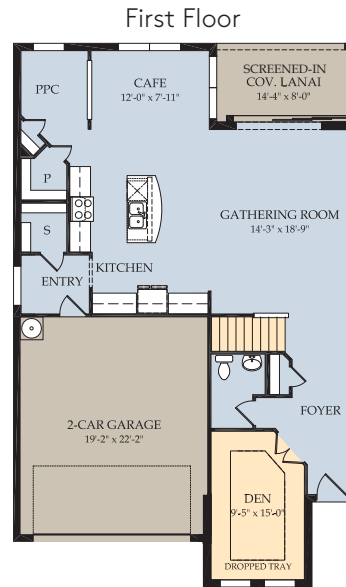
Second Floor



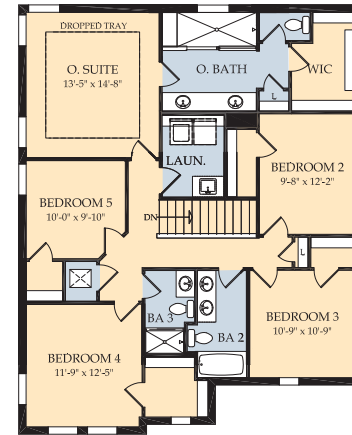
Package C



Home Exterior FM2B



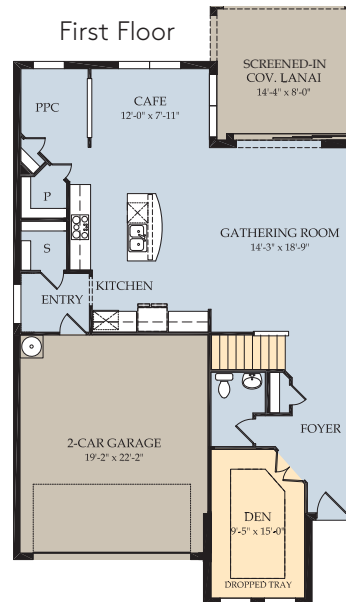
Second Floor



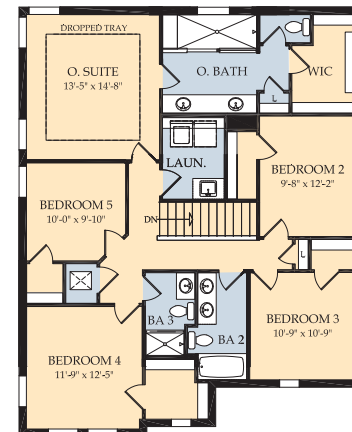
Package D



Home Exterior FM2B



Second Floor



Artist's renderings are conceptual only and are not intended to be an exact representation or show specific detailing. Square footage, room dimensions and spatial arrangements on this plan are approximate and may vary in final construction and may vary by elevation. See a sales representative for details. ©2020 Pulte Home Company, LLC. CBC057850 ENC 11-17-20

First Floor



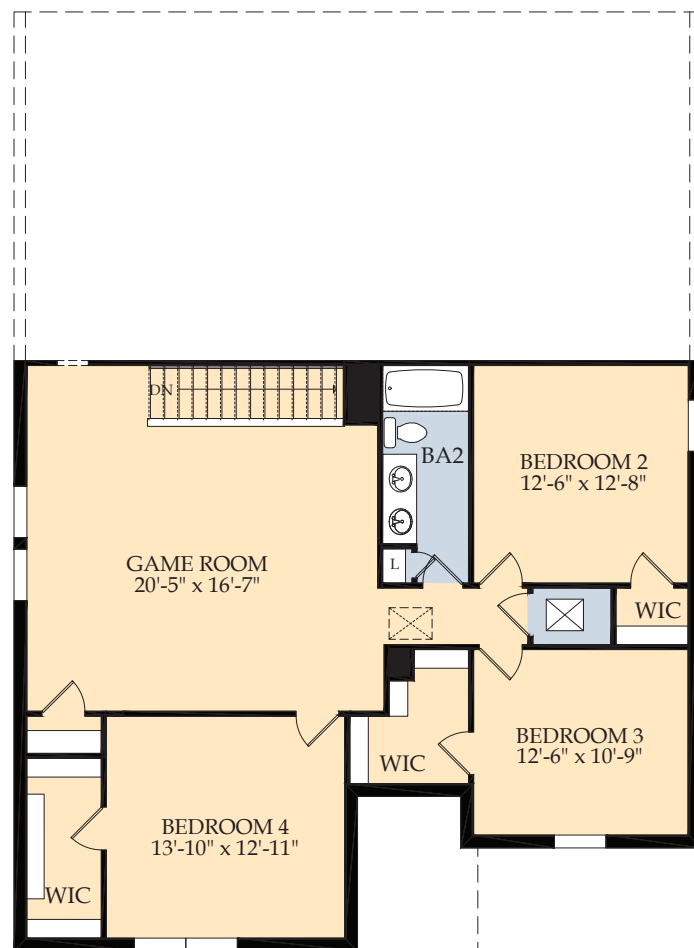
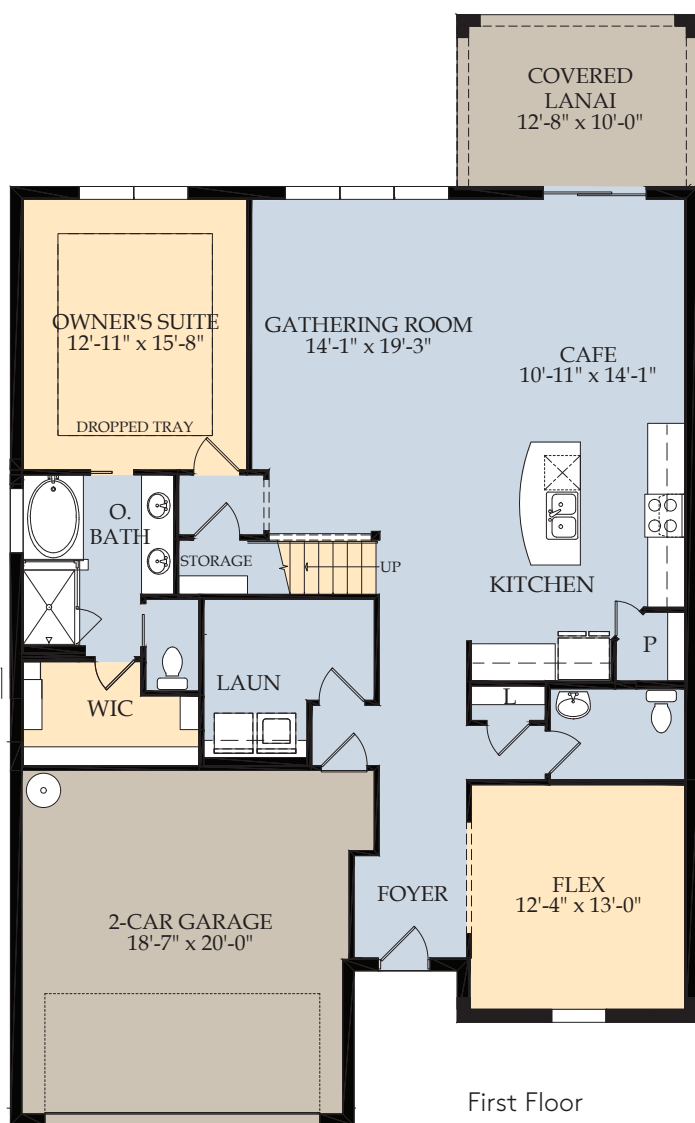
CITRUS GROVE

2,830 A/C Sq. Ft.
4-5 Bedrooms | 2.5-3 Baths

Package A



Home Exterior FM2B



Click to View:

- [Webpage](#)
- [Interactive Floor Plan](#)
- [Virtual Reality Tour](#)
- [Video](#)



7910 NW 79th Terrace, Tamarac, FL 33321 | 954-371-0896 | pulte.com/enclaves

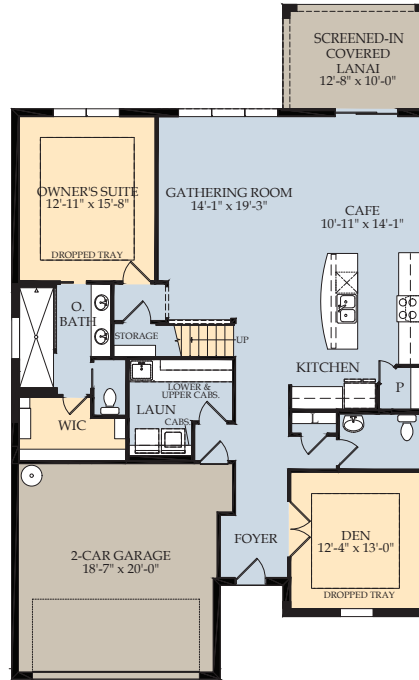
ENCLAVES AT WOODMONT

CITRUS GROVE

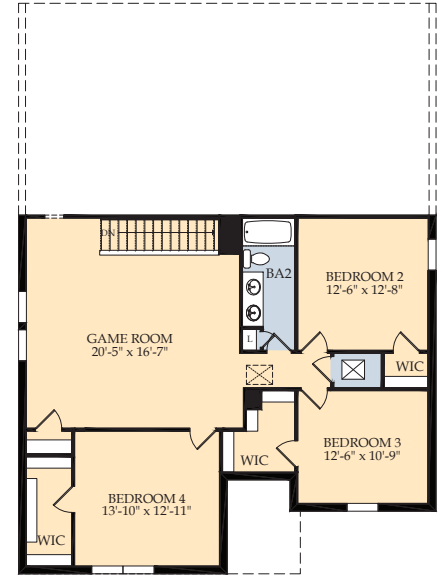
Package B



Home Exterior FM2A



First Floor

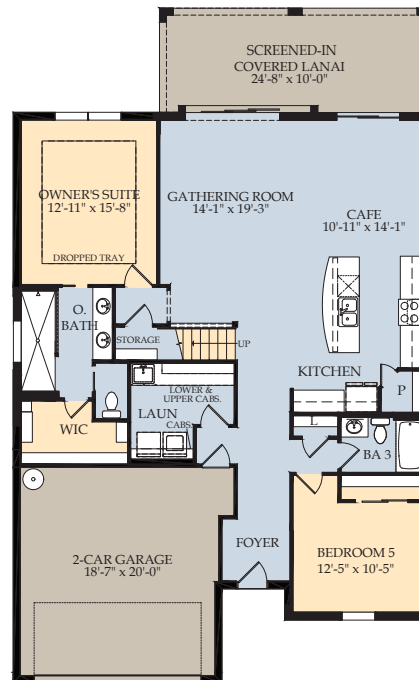


Second Floor

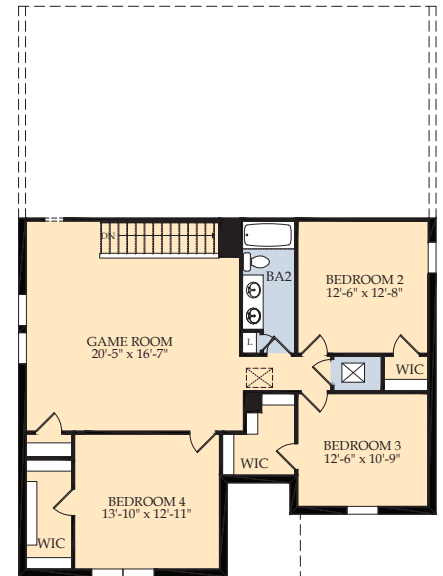
Package C



Home Exterior FM2A



First Floor



Second Floor





INCLUDED FEATURES

at

Enclaves at Woodmont

QUALITY CONSTRUCTION FEATURES

- Steel-reinforced concrete block construction
- Professionally engineered roof trusses with hurricane tie-downs for wind protection

ENHANCED EXTERIOR FEATURES

- Tile roof
- Easy to maintain decorative stucco exterior
- Ventilated aluminum soffits
- High-grade Sherwin-Williams latex paint
- Decorative brick paver driveway
- Large, private lanai
- High-impact glass windows
- Professionally landscaped home site with full sod coverage and automatic sprinkler system

INTERIOR FEATURES

- Tile floors in foyer, gathering room, kitchen, cafe, baths, and laundry
- Upgraded raised-panel interior doors
- Walk-in owner's closet
- Decorative chrome door hardware

IMPRESSIVE KITCHEN FEATURES

- Wood kitchen cabinets with 42" upper wall cabinets and hardware
- Granite countertops
- Whirlpool® microwave
- Whirlpool® multiple-cycle dishwasher
- Whirlpool® electric range with self-cleaning oven
- Stainless Steel kitchen sink with electric garbage disposal
- Moen® faucet with pullout sprayer

LUXURIOUS BATH FEATURES

- Owner's shower with glass enclosure
- Tiled shower walls
- Granite countertops in owner's bathroom
- Corian® countertops in secondary bathrooms
- Decorative Moen® faucet
- Wood bath cabinets

ENERGY SAVINGS AND ELECTRICAL FEATURES

- Ceiling fan prewires, per plan
- Decora rocker switches
- Cable TV and telephone outlets, per plan
- Smoke detectors/carbon monoxide detectors
- R-30 ceiling insulation
- Automatic garage door opener with remote controls
- Insulated fiberglass entry door
- Compact fluorescent exterior lighting
- Exterior waterproof electrical outlets
- Lennox® central air conditioning and heating system with programmable thermostat
- Double-pane, insulated, low E (high efficiency) screened windows
- Energy-efficient water heater
- Pulte Homes Smart Home: every home is prewired for connectivity giving you the flexibility to make your home as smart as you want it to be

EXCLUSIVE FEATURES

- Unmatched 1,2,5 & 10-year Pulte Protection Plan, transferable limited warranty
- **MORTGAGE**
With access to a broad menu of loan programs, the professionals at our partner Pulte Mortgage will find the right plan for you.
- **TITLE**
Our partners at PGP Title work closely with Pulte Mortgage to ensure your closing is a seamless transaction.
- **WARRANTY**
Our experienced warranty team is ready to help you with any service needs once you move in.





OUR COMMITMENT TO QUALITY

Our building practices meet or exceed industry requirements. With over 65 years of experience, we have homebuilding down to a science.



Pulte Construction Standards meet or exceed those of the industry. We strictly follow all specifications for every system, as well as those for the fit and finishes throughout the house. Independent auditors regularly conduct inspections for verification and quality control.

| DURABILITY | |
|-------------------------------|--|
| Foundation | <p>VERIFIED QUALITY: Both Field Manager and municipality inspections to verify foundation quality</p> <p>TAPE AND POLY SEAMS: Protective measure taken to help minimize intrusion of vapor, moisture, and gases such as radon</p> |
| Exterior (Brick/Stone/Stucco) | <p>VENEERS WITH DRAINAGE PLANES: Installed to minimize likelihood of water intrusion, with drainage planes behind exterior veneers to help repel moisture away from your home</p> <p>HURRICANE SHUTTERS: Standard feature in every home and engineered to meet the Florida Building Code (optional impact glass available)</p> |
| Framing | <p>DETAILED INSPECTIONS: Performed to ensure expert framing and a solid structure that will last for years to come</p> <p>STEEL-REINFORCED CONCRETE BLOCK: Professionally engineered concrete block wall construction reinforced with concrete and steel rebar</p> |
| Roofing | <p>UNDERLAYMENT: Installed in locations on the roof where leaks are most likely to occur, acting as a barrier to help keep moisture from entering your home</p> <p>ROOF TRUSSES WITH HURRICANE STRAPS: Professionally engineered roof trusses attached by hurricane straps anchored in concrete</p> |

| ENERGY EFFICIENCY | |
|--|--|
| Draft Protection and Moisture Prevention | <p>BUILDING HOUSE WRAP: Engineered to minimize rain intrusion into walls while allowing water vapor to pass to the exterior. Seams carefully sealed to reduce excess air flow.</p> <p>BUTYL TAPE/LIQUID WATERPROOFING: Installed at all tubs, windows, and doors to reduce the risk of water damage, as well as excess air flow from entering or exiting your home</p> <p>CONSTRUCTION JOINTS & WINDOW FRAMES: Sealed to help limit leaks and drafts, keep bugs out, and help reduce dust and allergens</p> <p>WEATHERPROOF WALL PENETRATIONS: Installed at exterior wall plumbing and electrical penetrations to provide sealed air barrier and reduce the risk of water intrusions that can lead to mold, dry rot and other problems</p> |
| Windows | <p>LOW-E WINDOWS: Installed to reduce energy loss and control heat transfer while lessening UV rays that can cause fading on some furniture</p> |
| Heating and Cooling | <p>HVAC SYSTEMS: Appropriately sized to deliver outstanding efficiency, help lower energy consumption, and help lower energy bills</p> |
| Appliances | <p>ENERGY-EFFICIENT APPLIANCES: Chosen to reduce energy consumption and help you save on energy costs</p> |
| FINISH DETAILS | |
| Fixtures and Finishes | <p>NATIONAL BRAND PARTNERSHIPS: Curated premium design and details for your home through our national partnerships with Moen®, Whirlpool®, Shaw®, and Sherwin-Williams®, so the details and design in your home are first class</p> |
| Drywall/Interior | <p>FIELD MANAGER INSPECTIONS: Ensure proper drywall installation to help create smooth walls and minimize cracks and screw pops</p> |



SMART HOME

SMART FROM THE GROUND UP



WHEN YOUR HOME GETS SMARTER, YOUR LIFE GETS EASIER

Pulte Smart Home gives you the flexibility to make your home exactly as smart as you want it to be, from the basic prewired and ready for anything to a full suite of automation that really brings your home to life.

Robust Wi-Fi in your home. Heating and cooling controlled from your smartphone. Garage doors and door locks that can be controlled and monitored from thousands of miles away. Next-level home entertainment.

The future is here. And it lives at your house, with Smart Home from Pulte.

pulte.com/SmartHome

SMART HOME BASE: EVERY HOME IS PREWIRED FOR CONNECTIVITY



WIRING ENCLOSURE



WIRELESS ACCESS POINTS WIRING



HARDWIRED ROOM



CAT6 WIRING



VOICE CONTROL

Adjust connected features just by speaking - no need to find the controllers for everything.



WIRELESS ACCESS POINT

Minimizes gaps in Wi-Fi coverage. So no more being stuck in one room to use the Internet.



CLIMATE CONTROL

Never too cold. Never too hot. Save money when the system learns your schedule.



GARAGE DOOR

Flexibility to open/close even when you're not home.



FRONT DOOR LOCKS

Know your front door is secure at all times. Lock and unlock it even when you're not home.



WHITE GLOVE SERVICE

Don't worry about setup. It will all be set up and ready to use.

À LA CARTE OPTIONS: BASED ON WHAT IS AVAILABLE IN YOUR AREA

ENTRY LIGHTING

ADDITIONAL DOOR LOCKS

SMART SWITCHES

HOME THEATER

USB OUTLETS

AUTOMATED IRRIGATION

SOUND & MUSIC

SMART APPLIANCES

DISTRIBUTED AUDIO

Pulte Smart Home features are available for an additional cost and may be installed by a third party after your home purchase. Pulte makes no representation or guarantee that equipment, networks, or services will satisfy all homeowner needs or that such equipment, network, services, or any connected devices are secure or will prevent cyberattacks or privacy intrusions even if properly configured. Wireless performance in homes will vary due to construction and/or design changes, placement of appliances/furnishings, usage, and local conditions. Homeowners must obtain their own Internet service and determine their bandwidth needs. Some features of Pulte Smart Home may require a compatible device and require that you have an account with a third party. Features shown or described are each a model, manufacturer, type, and grade selected by builder, and builder reserves the right to substitute the selection at any time without notice. Any warranty or guaranty of any product included or installed is offered by the product manufacturer or installer and not Pulte Homes, and builder does not warrant any product or its installation. Features of the Pulte Smart Home are not a substitute for a home security system or monitoring company. See sales consultant for details regarding Pulte Smart Home features and costs. Photograph is for illustrative purposes only and is not an actual representation of any features or designs of a specific home or features offered. This material shall not constitute a valid offer in any state where prior registration is required or if void by law. © 2018 PulteGroup, Inc. All rights reserved. January 2021



EQUAL HOUSING OPPORTUNITY



10-Year Limited Structural Warranty

We won't just
build you
a new home.
We'll also
stand behind it.

Pulte homes are built for life and the way you live it. Peace of mind comes from the thoughtful Life Tested® design, quality craftsmanship, and a warranty you can rely on.

WARRANTY HIGHLIGHTS

10 year coverage on structural elements of the home

5 year coverage on various types of water infiltration and internal leaks

2 year coverage on the workability of plumbing, electrical, HVAC, and other mechanical systems

1 year coverage on materials and workmanship

Warranty is transferable



More Life Built In®



Descriptions of features and products are not a warranty as to performance of any feature or product, but are a general description of intended performance. In our continuing effort to improve our product, Pulte reserves the right to make changes or modifications to plans, specifications, materials, features, or floor plans without notice. Construction features, techniques, and materials are subject to modification and change from time to time without notice. See sales consultant for actual features and materials in a particular home at time of purchase. Pulte reserves the right to modify, substitute, or withdraw any features, designs, appliances, or manufacturers listed or described at any time without notice. Warranties are transferable to subsequent owner who takes title within the applicable warranty period. Information above is intended only to highlight certain aspects of the warranty. Terms, conditions, exclusions, and limitations apply. Warranty is based on Performance Standards criteria that are set forth in the full warranty. A complete description of warranty terms, conditions, exclusions, and limitations is available at <http://www.pulte.com>. 10-year structural warranty covers: footings, bearing walls, beams, girders, trusses, rafters, bearings, columns, lintels, posts, structural fasteners, subfloors, and roof sheathing. The warranty description set forth above does not describe or apply to homes in California or New Jersey. The photograph depicts a model containing features or designs that may not be available on all homes. Actual energy usage is dependent on a number of factors, including energy consumption, energy conservation practices, home orientation, and weather conditions. This material shall not constitute a valid offer in any state where prior registration is required or if void by law. Life Tested® is a registered trademark of PN II, Inc. © 2021 Pulte Home Corporation. More life built in® is a registered trademark of PN II, LLC. All other trademarks not owned by builder are the property of their respective owners. © Pulte Home Company, LLC. All rights reserved (Jan. 2021). CBC057850