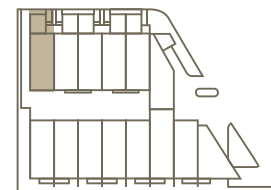
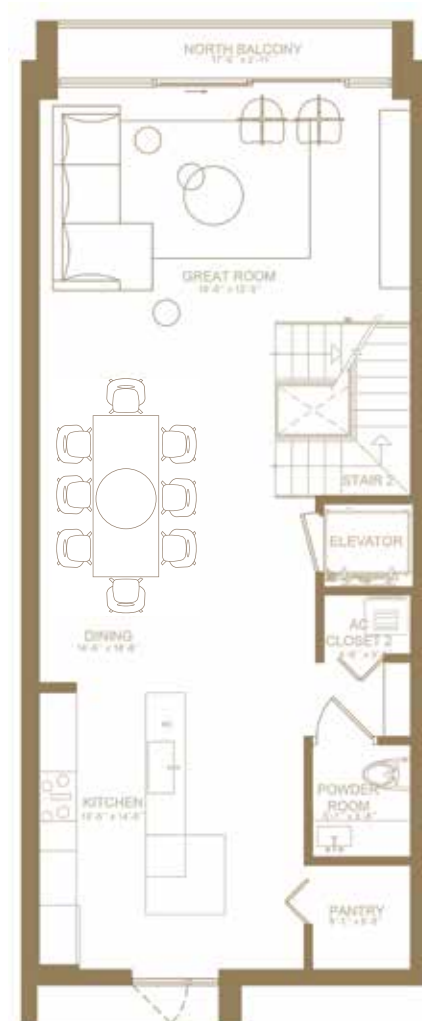


# KING *palm*

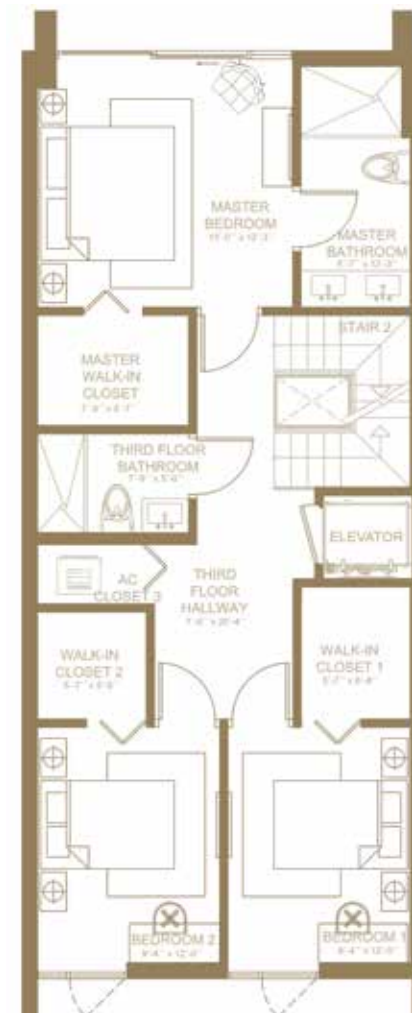
Townhome Units shown are examples of townhome unit types and may not depict actual townhome units. Stated square footages are ranges for a particular townhome unit type and are measured to the exterior boundaries of the exterior walls and the centerline of interior demising walls and in fact vary from the area that would be determined by using the description and definition of the "unit" set forth in the Declaration of Covenants and Restrictions for Palm Villas Homeowners' Association (which generally only includes the interior airspace between the perimeter walls and excludes interior structural components). All depictions of appliances, plumbing fixtures, equipment, counters, soffits, floor coverings and other matters of detail are conceptual only and are not necessarily included in each unit. Consult your agreement for the items included with the Unit. Dimensions and square footage are approximate, will vary with specific unit type, and may vary with actual construction. Additionally, measurements of rooms set forth on any floor plan are nominal and generally taken at the greatest points of each given room (as if the room were a perfect rectangle), without regard for any closets. Unit orientation and windows (including number, size, orientation and awnings), balcony (including configuration, size and railing/balustrade), structure and mechanical chases may vary.



GROUND FLOOR  
Garage Entry



SECOND FLOOR  
Main Living



THIRD FLOOR  
Master Suite and Bedrooms



FOURTH FLOOR  
Rooftop Terrace and Amenities

## KING PALM

## RESIDENCE 1

### RESIDENCE DESCRIPTION

3 BED | 4.5 BATH

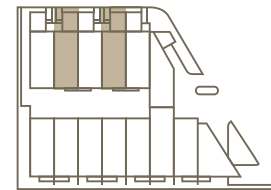
Family + Den + Garden + Balcony + 2 Covered Parking Spaces

TOTAL A/C	2,804 sq. ft.	260 sq. mt.
OUTDOOR LIVING	1,307 sq. ft.	121 sq. mt.
<b>TOTAL</b>	<b>4,111 sq. ft.</b>	<b>381 sq. mt.</b>

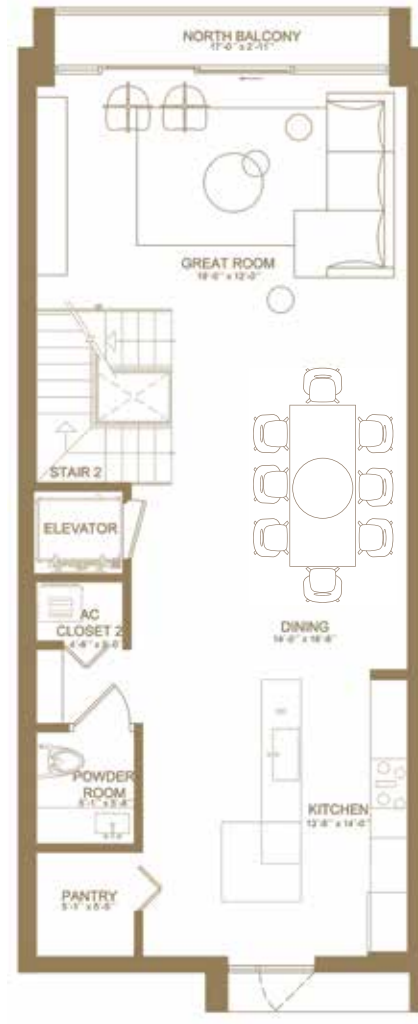
PALM  
VILLAS

# QUEEN *palm*

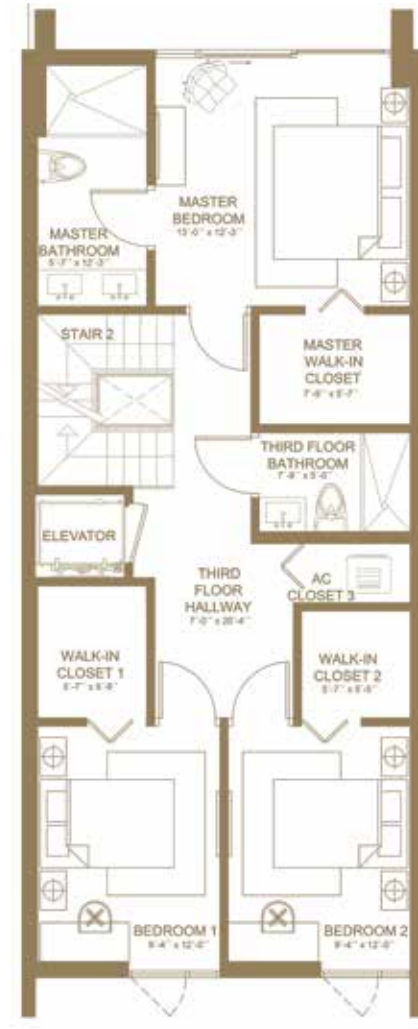
Townhome Units shown are examples of townhome unit types and may not depict actual townhome units. Stated square footages are ranges for a particular townhome unit type and are measured to the exterior boundaries of the exterior walls and the centerline of interior demising walls and in fact vary from the area that would be determined by using the description and definition of the "unit" set forth in the Declaration of Covenants and Restrictions for Palm Villas Homeowners' Association (which generally only includes the interior airspace between the perimeter walls and excludes interior structural components). All depictions of appliances, plumbing fixtures, equipment, counters, soffits, floor coverings and other matters of detail are conceptual only and are not necessarily included in each unit. Consult your agreement for the items included with the Unit. Dimensions and square footage are approximate, will vary with specific unit type, and may vary with actual construction. Additionally, measurements of rooms set forth on any floor plan are nominal and generally taken at the greatest points of each given room (as if the room were a perfect rectangle), without regard for any cutouts. Unit orientation and windows (including number, size, orientation and awnings), balcony (including configuration, size and railing/balustrade), structure and mechanical chases may vary.



GROUND FLOOR  
Garage Entry



SECOND FLOOR  
Main Living



THIRD FLOOR  
Master Suite and Bedrooms



FOURTH FLOOR  
Rooftop Terrace and Amenities

## QUEEN PALM

RESIDENCES 2 & 4

### RESIDENCE DESCRIPTION

3 BED | 4.5 BATH

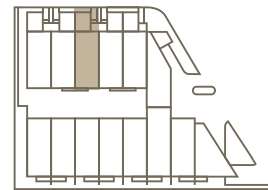
Family + Den + Garden + Balcony + 2 Covered Parking Spaces

TOTAL A/C	2,758 sq. ft.	256 sq. mt.
OUTDOOR LIVING	1,297 sq. ft.	120 sq. mt.
<b>TOTAL</b>	<b>4,055 sq. ft.</b>	<b>376 sq. mt.</b>

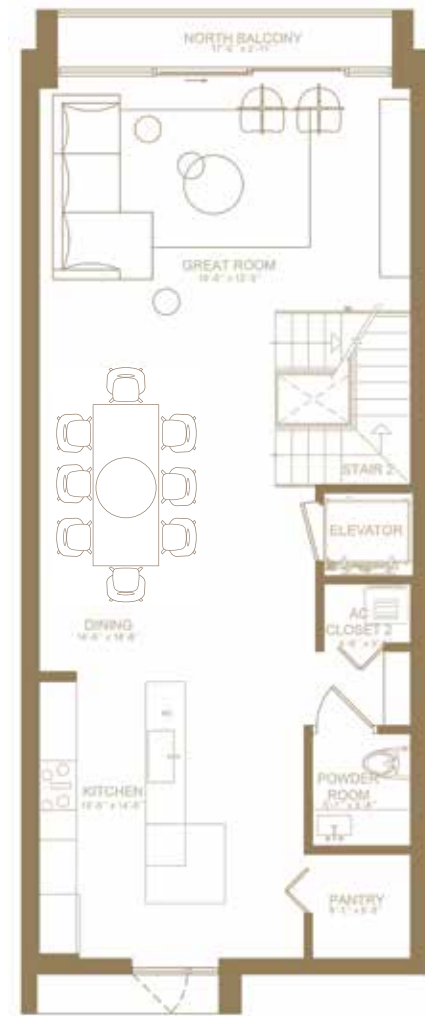


# COCONUT *palm*

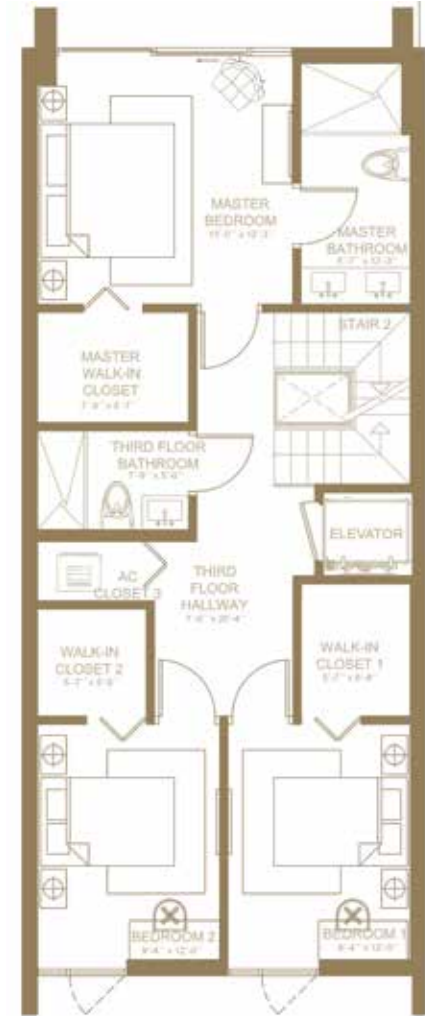
Townhome Units shown are examples of townhome unit types and may not depict actual townhome units. Stated square footages are ranges for a particular townhome unit type and are measured to the exterior boundaries of the exterior walls and the centerline of interior demising walls and in fact vary from the area that would be determined by using the description and definition of the "unit" set forth in the Declaration of Covenants and Restrictions for Palm Villas Homeowners' Association (which generally only includes the interior airspace between the perimeter walls and excludes interior structural components). All depictions of appliances, plumbing fixtures, equipment, counters, soffits, floor coverings and other matters of detail are conceptual only and are not necessarily included in each unit. Consult your agreement for the items included with the Unit. Dimensions and square footage are approximate, will vary with specific unit type, and may vary with actual construction. Additionally, measurements of rooms set forth on any floor plan are nominal and generally taken at the greatest points of each given room (as if the room were a perfect rectangle), without regard for any cutouts. Unit orientation and windows (including number, size, orientation and awnings), balcony (including configuration, size and railing/balustrade), structure and mechanical chases may vary.



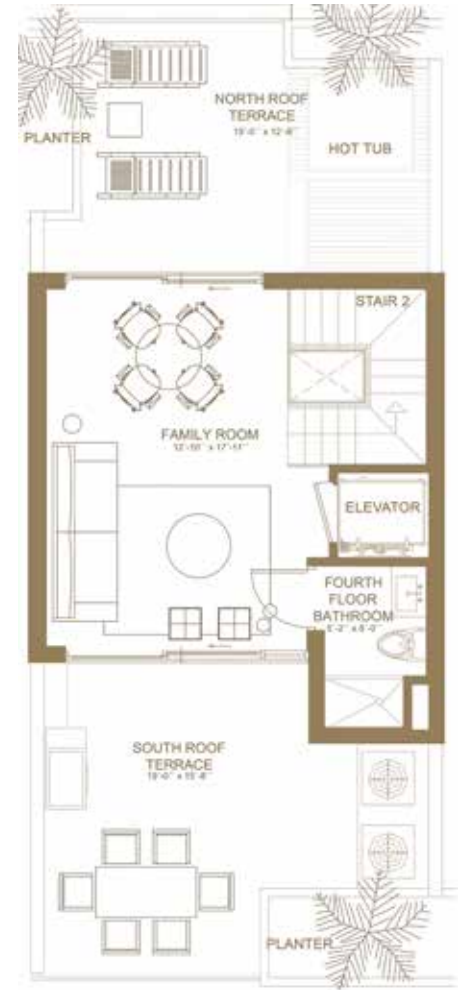
GROUND FLOOR  
Garage Entry



SECOND FLOOR  
Main Living



THIRD FLOOR  
Master Suite and Bedrooms



FOURTH FLOOR  
Rooftop Terrace and Amenities

## COCONUT PALM RESIDENCE 3

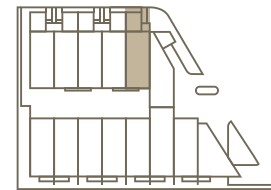
RESIDENCE DESCRIPTION  
3 BED | 4.5 BATH  
Family + Den + Garden + Balcony + 2 Covered Parking Spaces

TOTAL A/C	2,758 sq. ft.	256 sq. mt.
OUTDOOR LIVING	1,297 sq. ft.	120 sq. mt.
<b>TOTAL</b>	<b>4,055 sq. ft.</b>	<b>376 sq. mt.</b>

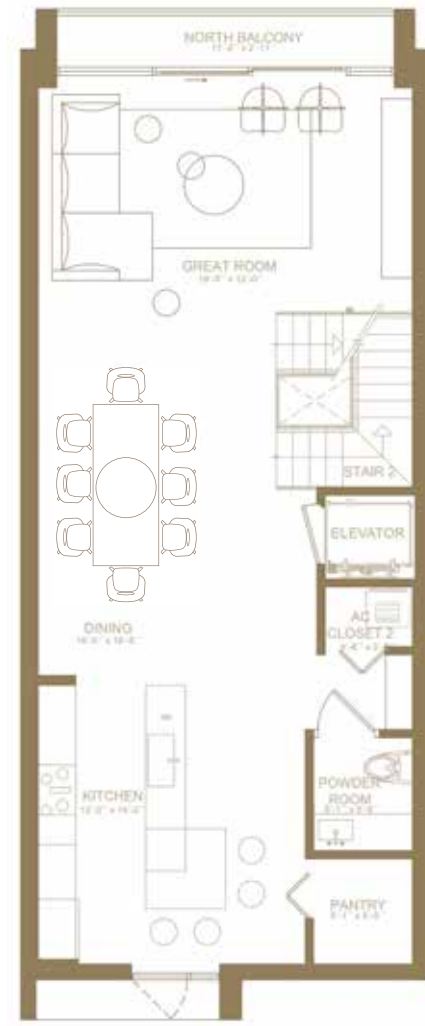


# MAJESTIC *palm*

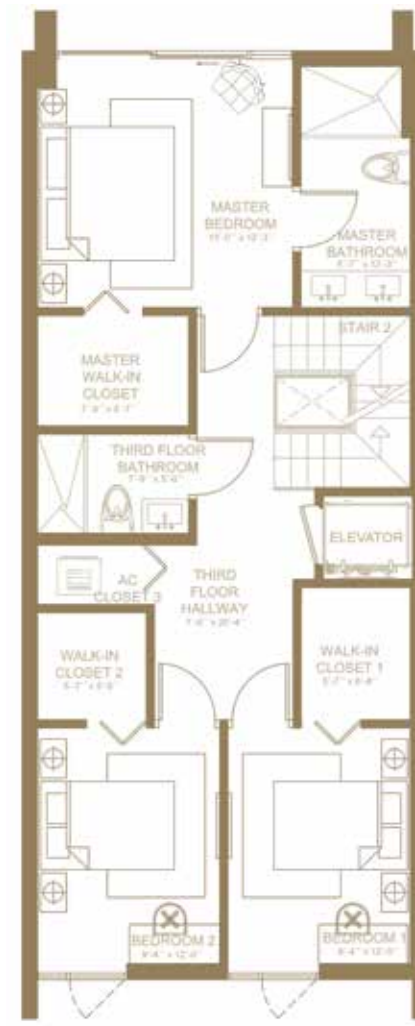
Townhome Units shown are examples of townhome unit types and may not depict actual townhome units. Stated square footages are ranges for a particular townhome unit type and are measured to the exterior boundaries of the exterior walls and the centerline of interior demising walls and in fact vary from the area that would be determined by using the description and definition of the "unit" set forth in the Declaration of Covenants and Restrictions for Palm Villas Homeowners' Association (which generally only includes the interior airspace between the perimeter walls and excludes interior structural components). All depictions of appliances, plumbing fixtures, equipment, counters, soffits, floor coverings and other matters of detail are conceptual only and are not necessarily included in each unit. Consult your agreement for the items included with the Unit. Dimensions and square footage are approximate, will vary with specific unit type, and may vary with actual construction. Additionally, measurements of rooms set forth on any floor plan are nominal and generally taken at the greatest points of each given room (as if the room were a perfect rectangle), without regard for any closets. Unit orientation and windows (including number, size, orientation and awnings), balcony (including configuration, size and railing/balustrade), structure and mechanical chases may vary.



GROUND FLOOR  
Garage Entry



SECOND FLOOR  
Main Living



THIRD FLOOR  
Master Suite and Bedrooms



FOURTH FLOOR  
Rooftop Terrace and Amenities

## MAJESTIC PALM RESIDENCE 5

### RESIDENCE DESCRIPTION

3 BED | 4.5 BATH

Family + Den + Garden + Balcony + 2 Covered Parking Spaces

TOTAL A/C 2,771 sq. ft. 257 sq. mt.

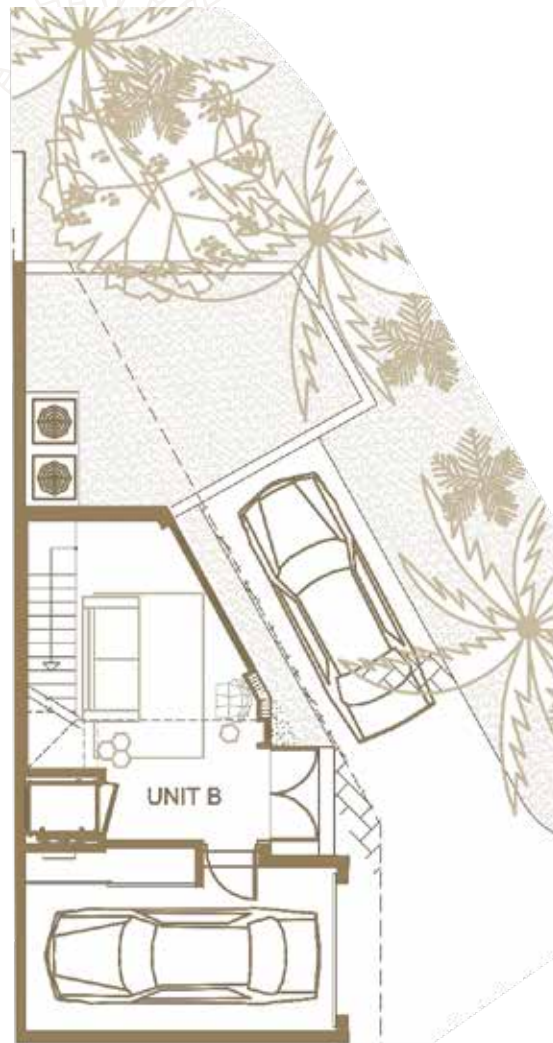
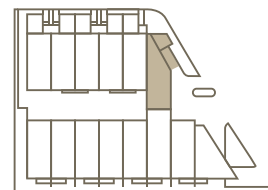
OUTDOOR LIVING 1,297 sq. ft. 120 sq. mt.

**TOTAL 4,068 sq. ft. 377 sq. mt.**



# SABAL *palm*

Townhome Units shown are examples of townhome unit types and may not depict actual townhome units. Stated square footages are ranges for a particular townhome unit type and are measured to the exterior boundaries of the exterior walls and the centerline of interior demising walls and in fact vary from the area that would be determined by using the description and definition of the "unit" set forth in the Declaration of Covenants and Restrictions for Palm Villas Homeowners' Association (which generally only includes the interior airspace between the perimeter walls and excludes interior structural components). All depictions of appliances, plumbing fixtures, equipment, counters, soffits, floor coverings and other matters of detail are conceptual only and are not necessarily included in each unit. Consult your agreement for the items included with the Unit. Dimensions and square footage are approximate, will vary with specific unit type, and may vary with actual construction. Additionally, measurements of rooms set forth on any floor plan are nominal and generally taken at the greatest points of each given room (as if the room were a perfect rectangle), without regard for any closets. Unit orientation and windows (including number, size, orientation and awnings), balcony (including configuration, size and railing/balustrade), structure and mechanical chases may vary.



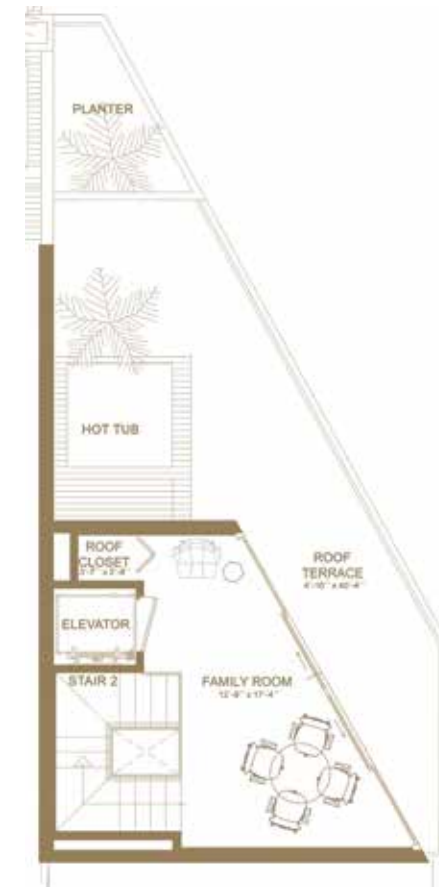
GROUND FLOOR  
Garage Entry



SECOND FLOOR  
Main Living



THIRD FLOOR  
Master Suite and Bedrooms



FOURTH FLOOR  
Rooftop Terrace and Amenities

## SABAL PALM

## RESIDENCE 6

### RESIDENCE DESCRIPTION

3 BED | 2.5 BATH

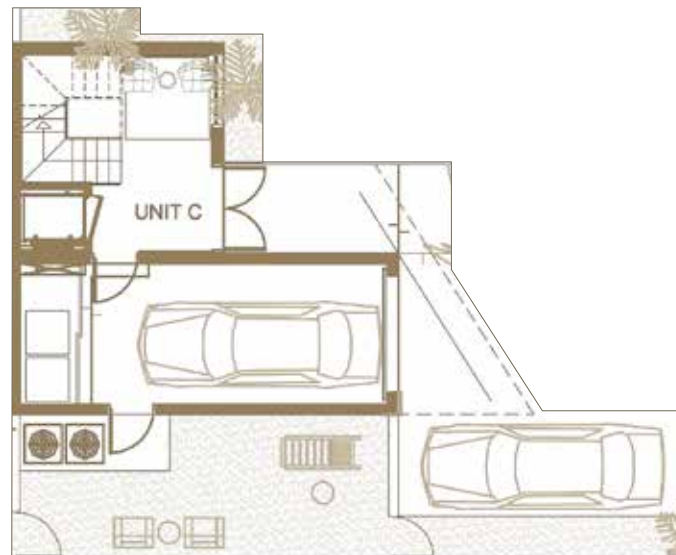
Family + Garden + Balcony + 1 AC/Garage + 1 Outdoor Parking Space

TOTAL A/C	2,532 sq. ft.	235 sq. mt.
OUTDOOR LIVING	1,414 sq. ft.	131 sq. mt.
<b>TOTAL</b>	<b>3,946 sq. ft.</b>	<b>366 sq. mt.</b>

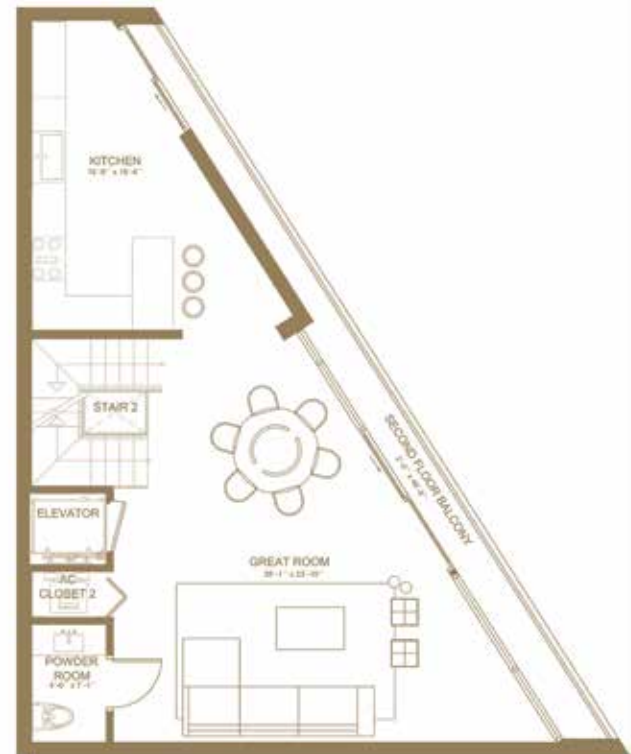


# SYLVESTER *palm*

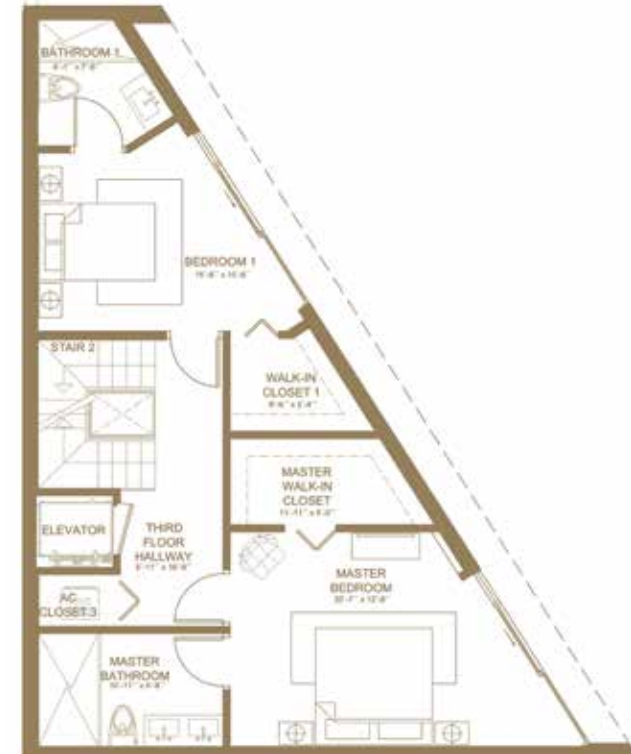
Townhome Units shown are examples of townhome unit types and may not depict actual townhome units. Stated square footages are ranges for a particular townhome unit type and are measured to the exterior boundaries of the exterior walls and the centerline of interior demising walls and in fact vary from the area that would be determined by using the description and definition of the "unit" set forth in the Declaration of Covenants and Restrictions for Palm Villas Homeowners' Association (which generally only includes the interior airspace between the perimeter walls and excludes interior structural components). All depictions of appliances, plumbing fixtures, equipment, counters, soffits, floor coverings and other matters of detail are conceptual only and are not necessarily included in each unit. Consult your agreement for the items included with the Unit. Dimensions and square footage are approximate, will vary with specific unit type, and may vary with actual construction. Additionally, measurements of rooms set forth on any floor plan are nominal and generally taken at the greatest points of each given room (as if the room were a perfect rectangle), without regard for any cutouts. Unit orientation and windows (including number, size, orientation and awnings), balcony (including configuration, size and railing/balustrade), structure and mechanical chases may vary.



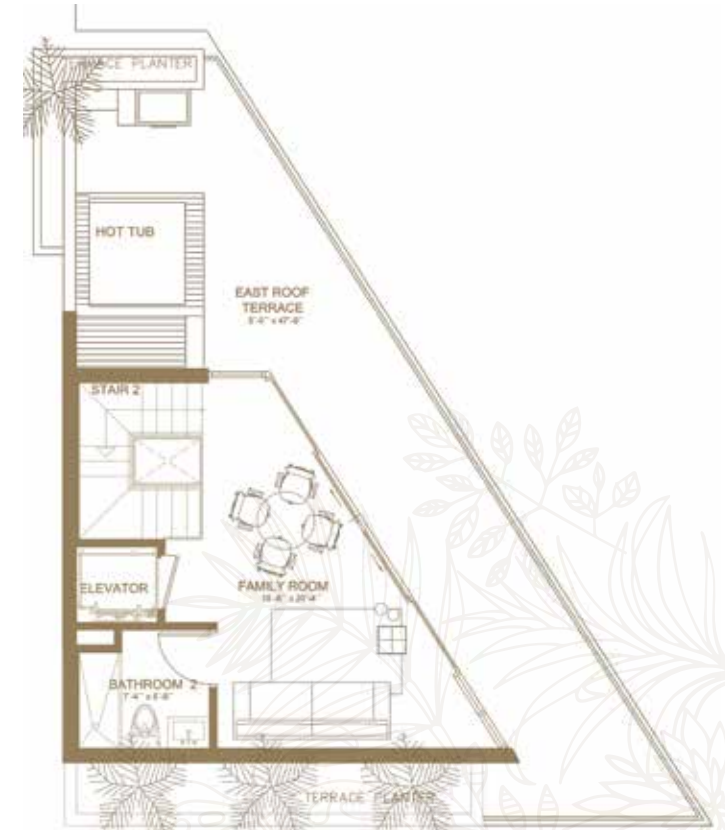
GROUND FLOOR  
Garage Entry



SECOND FLOOR  
Main Living



THIRD FLOOR  
Master Suite and Bedrooms



FOURTH FLOOR  
Rooftop Terrace and Amenities

## SYLVESTER PALM

RESIDENCE 7

### RESIDENCE DESCRIPTION

2 BED | 3.5 BATH

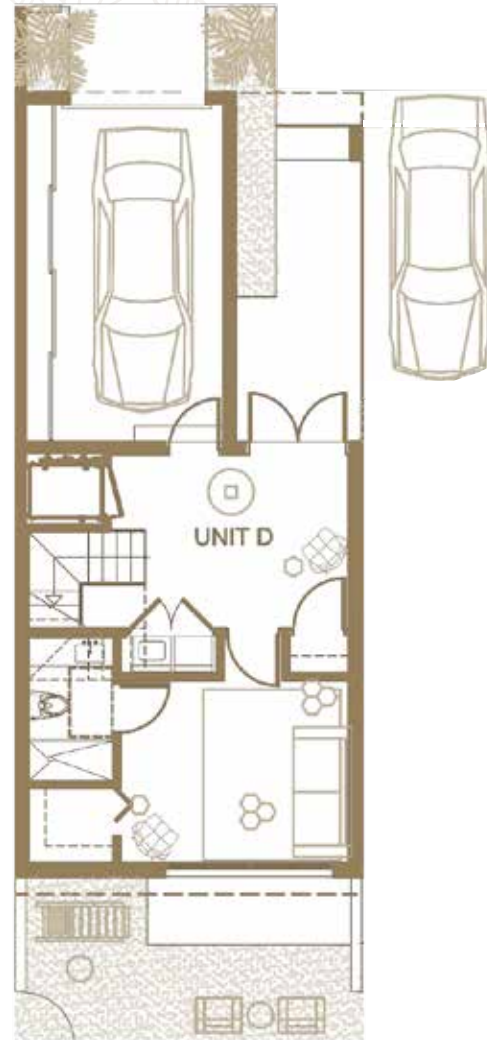
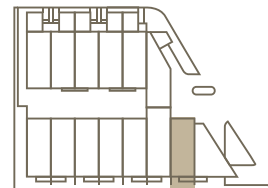
Family + Garden + Balcony + 1 AC/Garage + 1 Outdoor Parking Space

TOTAL A/C	2,295 sq. ft.	213 sq. mt.
OUTDOOR LIVING	1,130 sq. ft.	105 sq. mt.
<b>TOTAL</b>	<b>3,425 sq. ft.</b>	<b>318 sq. mt.</b>

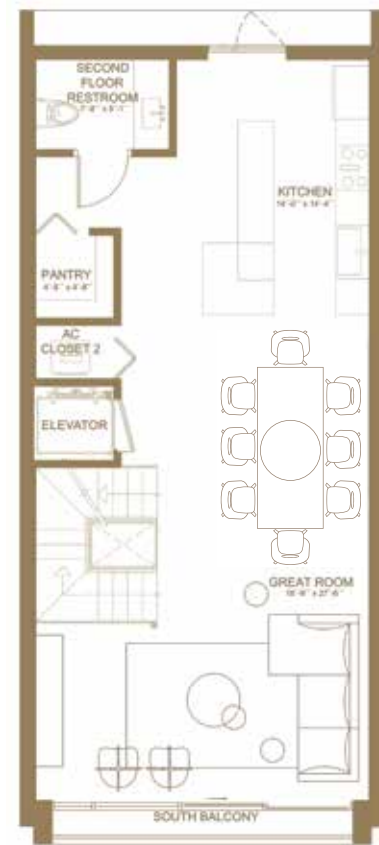
PALM  
VILLAS

# ARECA *palm*

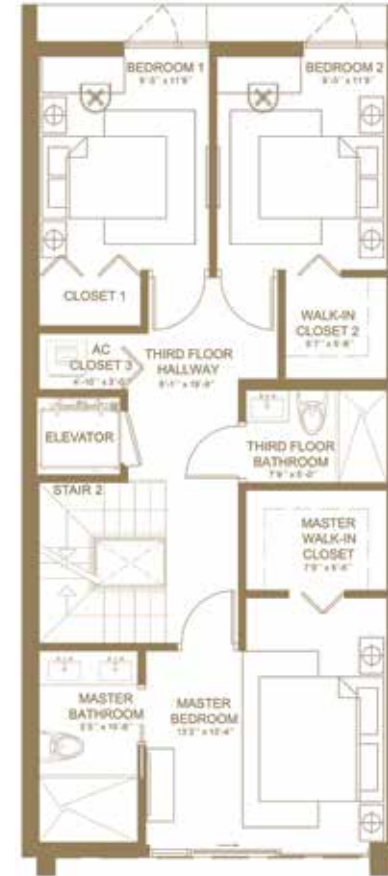
Townhome Units shown are examples of townhome unit types and may not depict actual townhome units. Stated square footages are ranges for a particular townhome unit type and are measured to the exterior boundaries of the exterior walls and the centerline of interior demising walls and in fact vary from the area that would be determined by using the description and definition of the "unit" set forth in the Declaration of Covenants and Restrictions for Palm Villas Homeowners' Association (which generally only includes the interior airspace between the perimeter walls and excludes interior structural components). All depictions of appliances, plumbing fixtures, equipment, counters, soffits, floor coverings and other matters of detail are conceptual only and are not necessarily included in each unit. Consult your agreement for the items included with the Unit. Dimensions and square footage are approximate, will vary with specific unit type, and may vary with actual construction. Additionally, measurements of rooms set forth on any floor plan are nominal and generally taken at the greatest points of each given room (as if the room were a perfect rectangle), without regard for any closets. Unit orientation and windows (including number, size, orientation and awnings), balcony (including configuration, size and railing/balustrade), structure and mechanical chases may vary.



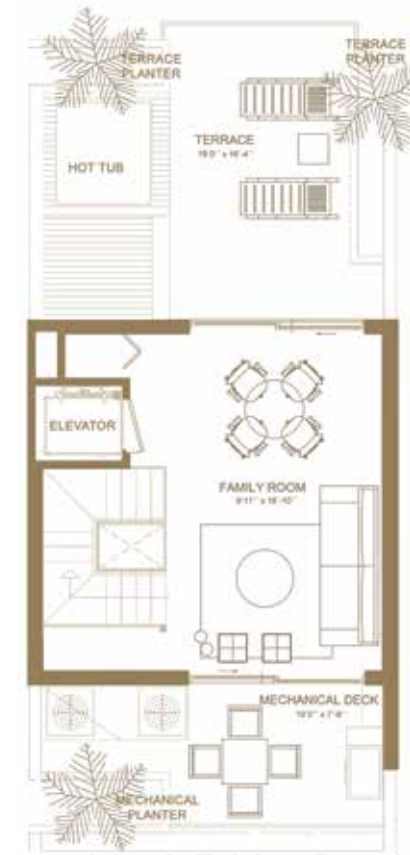
GROUND FLOOR  
Garage Entry



SECOND FLOOR  
Main Living



THIRD FLOOR  
Master Suite and Bedrooms



FOURTH FLOOR  
Rooftop Terrace and Amenities

## ARECA PALM

RESIDENCE 8

### RESIDENCE DESCRIPTION

3 BED | 3.5 BATHS

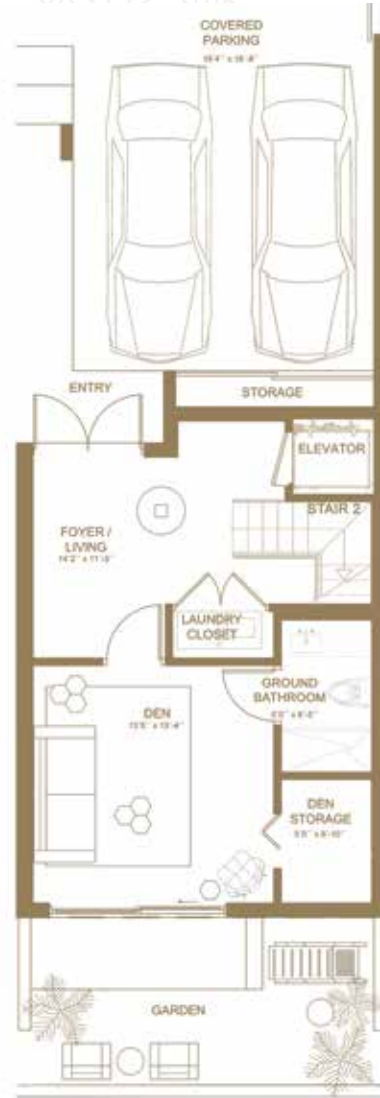
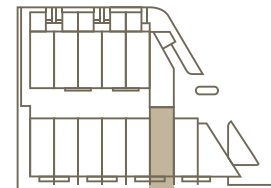
Family + Den + Garden + Balcony +1 AC/Garage + 1 Outdoor Parking Space

TOTAL A/C	2,609 sq. ft.	242 sq. mt.
OUTDOOR LIVING	949 sq. ft.	88 sq. mt.
<b>TOTAL</b>	<b>3,558 sq. ft.</b>	<b>330 sq. mt.</b>

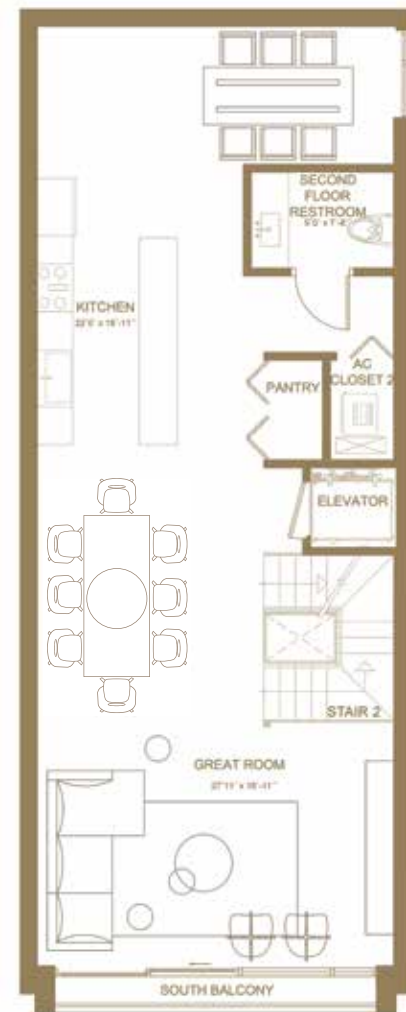
PALM  
VILLAS

# COPERNICIA *palm*

Townhome Units shown are examples of townhome unit types and may not depict actual townhome units. Stated square footages are ranges for a particular townhome unit type and are measured to the exterior boundaries of the exterior walls and the centerline of interior demising walls and in fact vary from the area that would be determined by using the description and definition of the "unit" set forth in the Declaration of Covenants and Restrictions for Palm Villas Homeowners' Association (which generally only includes the interior airspace between the perimeter walls and excludes interior structural components). All depictions of appliances, plumbing fixtures, equipment, counters, soffits, floor coverings and other matters of detail are conceptual only and are not necessarily included in each unit. Consult your agreement for the items included with the Unit. Dimensions and square footage are approximate, will vary with specific unit type, and may vary with actual construction. Additionally, measurements of rooms set forth on any floor plan are nominal and generally taken at the greatest points of each given room (as if the room were a perfect rectangle), without regard for any closets. Unit orientation and windows (including number, size, orientation and awnings), balcony (including configuration, size and railing/balustrade), structure and mechanical chases may vary.



GROUND FLOOR  
Garage Entry



SECOND FLOOR  
Main Living



THIRD FLOOR  
Master Suite and Bedrooms



FOURTH FLOOR  
Rooftop Terrace and Amenities

## COPERNICIA PALM RESIDENCE 9

### RESIDENCE DESCRIPTION

3 BED | 4.5 BATH

Family + Den + Garden + Balcony + 2 Covered Parking Spaces

TOTAL A/C 2,952 sq. ft. 274 sq. mt.

OUTDOOR LIVING 1,013 sq. ft. 94 sq. mt.

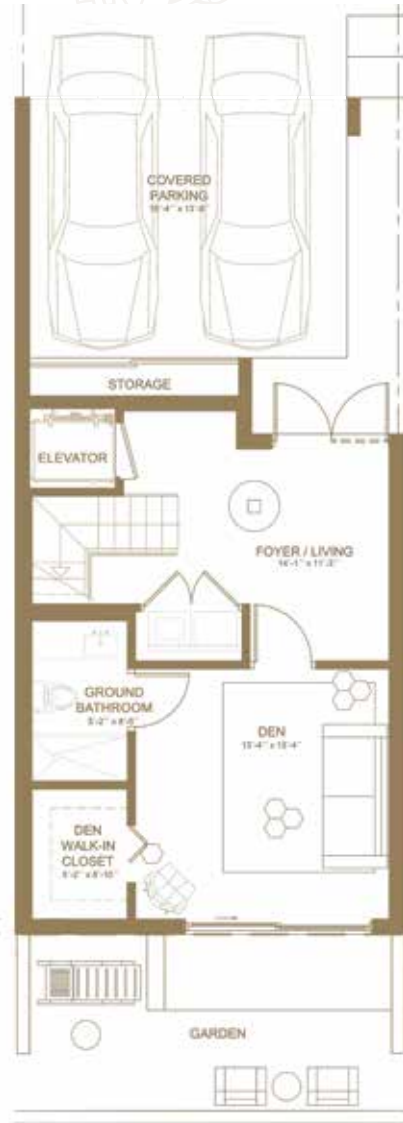
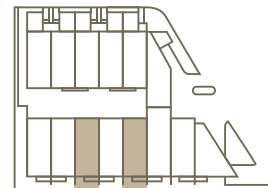
**TOTAL 3,965sq. ft. 368 sq. mt.**

PALM  
VILLAS

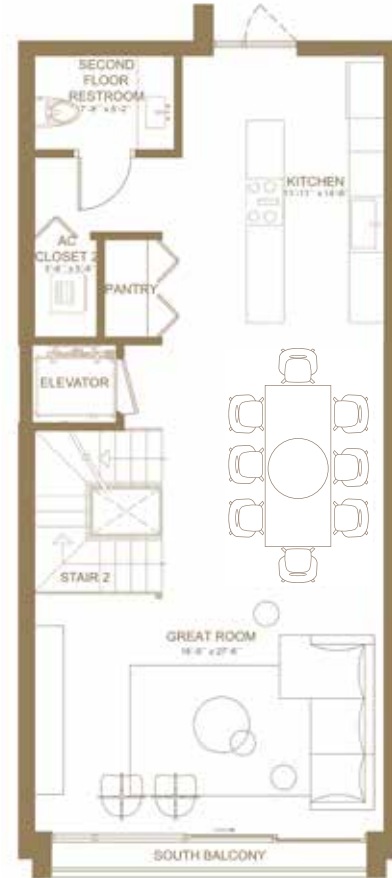


# KENTIA *palm*

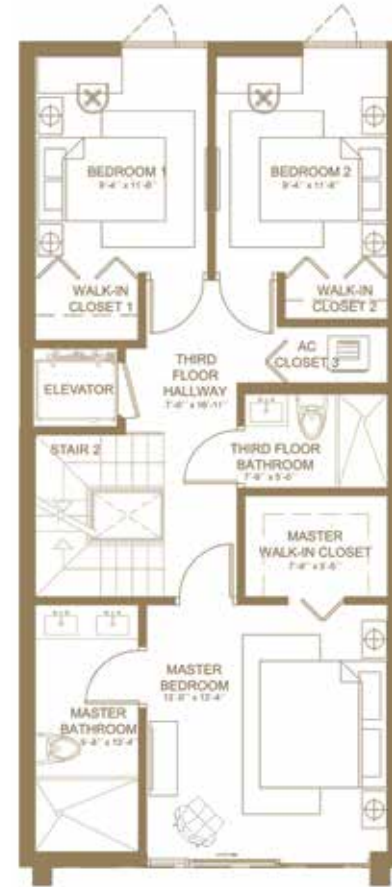
Townhome Units shown are examples of townhome unit types and may not depict actual townhome units. Stated square footages are ranges for a particular townhome unit type and are measured to the exterior boundaries of the exterior walls and the centerline of interior demising walls and in fact vary from the area that would be determined by using the description and definition of the "unit" set forth in the Declaration of Covenants and Restrictions for Palm Villas Homeowners' Association (which generally only includes the interior airspace between the perimeter walls and excludes interior structural components). All depictions of appliances, plumbing fixtures, equipment, counters, soffits, floor coverings and other matters of detail are conceptual only and are not necessarily included in each unit. Consult your agreement for the items included with the Unit. Dimensions and square footage are approximate, will vary with specific unit type, and may vary with actual construction. Additionally, measurements of rooms set forth on any floor plan are nominal and generally taken at the greatest points of each given room (as if the room were a perfect rectangle), without regard for any cutouts. Unit orientation and windows (including number, size, orientation and awnings), balcony (including configuration, size and railing/balustrade), structure and mechanical classes may vary.



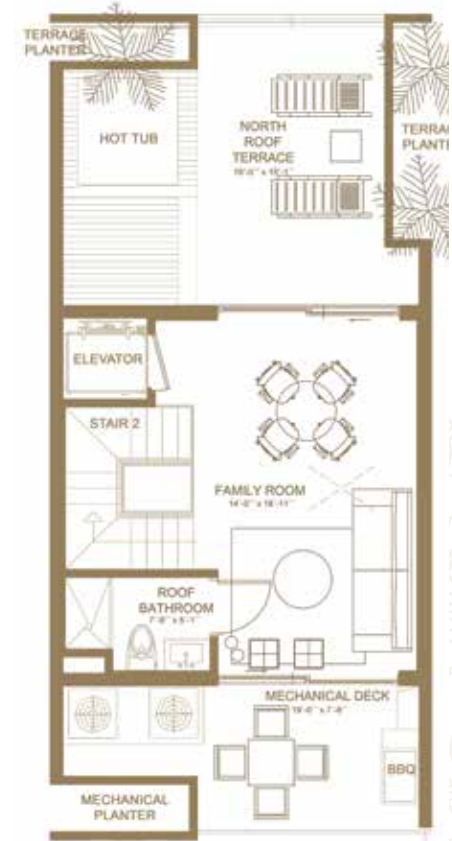
GROUND FLOOR  
Garage Entry



SECOND FLOOR  
Main Living



THIRD FLOOR  
Master Suite and Bedrooms



FOURTH FLOOR  
Rooftop Terrace and Amenities

## KENTIA PALM

RESIDENCES 10 & 12

### RESIDENCE DESCRIPTION

3 BED | 4.5 BATH

Family + Den + Garden + Balcony + 2 Covered Parking Spaces

TOTAL A/C 2,654 sq. ft. 246 sq. mt.

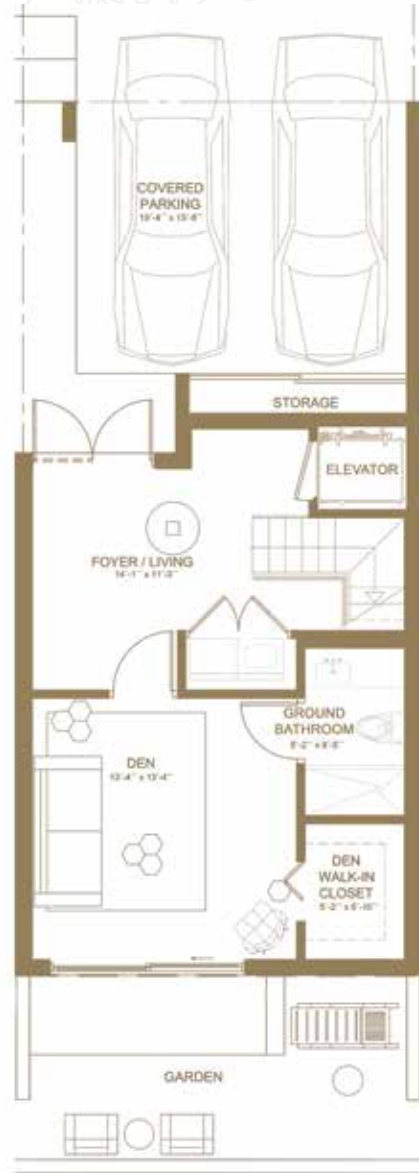
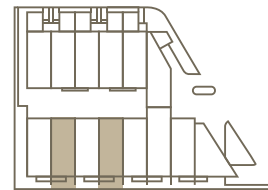
OUTDOOR LIVING 1,013 sq. ft. 94 sq. mt.

**TOTAL 3,667 sq. ft. 340 sq. mt.**

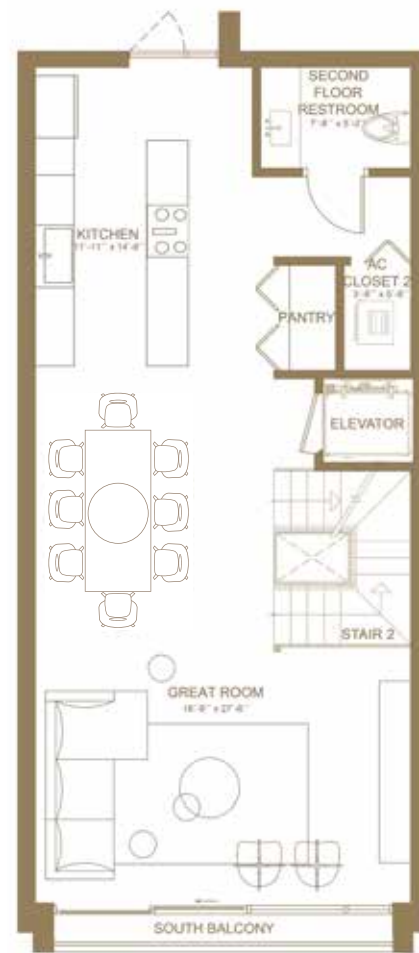
PALM  
VILLAS

# SAGO *palm*

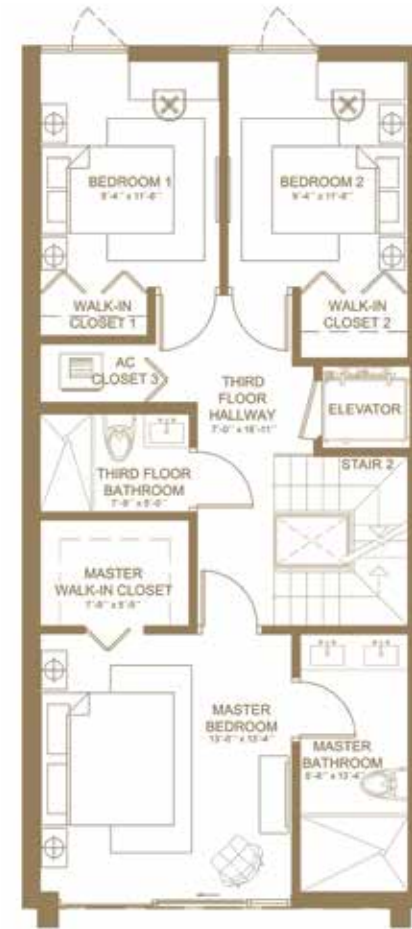
Townhome Units shown are examples of townhome unit types and may not depict actual townhome units. Stated square footages are ranges for a particular townhome unit type and are measured to the exterior boundaries of the exterior walls and the centerline of interior demising walls and in fact vary from the area that would be determined by using the description and definition of the "unit" set forth in the Declaration of Covenants and Restrictions for Palm Villas Homeowners' Association (which generally only includes the interior airspace between the perimeter walls and excludes interior structural components). All depictions of appliances, plumbing fixtures, equipment, counters, soffits, floor coverings and other matters of detail are conceptual only and are not necessarily included in each unit. Consult your agreement for the items included with the Unit. Dimensions and square footage are approximate, will vary with specific unit type, and may vary with actual construction. Additionally, measurements of rooms set forth on any floor plan are nominal and generally taken at the greatest points of each given room (as if the room were a perfect rectangle), without regard for any cutouts. Unit orientation and windows (including number, size, orientation and awnings), balcony (including configuration, size and railing/balustrade), structure and mechanical chases may vary.



GROUND FLOOR  
Garage Entry



SECOND FLOOR  
Main Living



THIRD FLOOR  
Master Suite and Bedrooms



FOURTH FLOOR  
Rooftop Terrace and Amenities

## SAGO PALM

RESIDENCE 11 & 13

### RESIDENCE DESCRIPTION

3 BED | 4.5 BATH

Family + Den + Garden + Balcony + 2 Covered Parking Spaces

TOTAL A/C 2,654 sq. ft. 246 sq. mt.

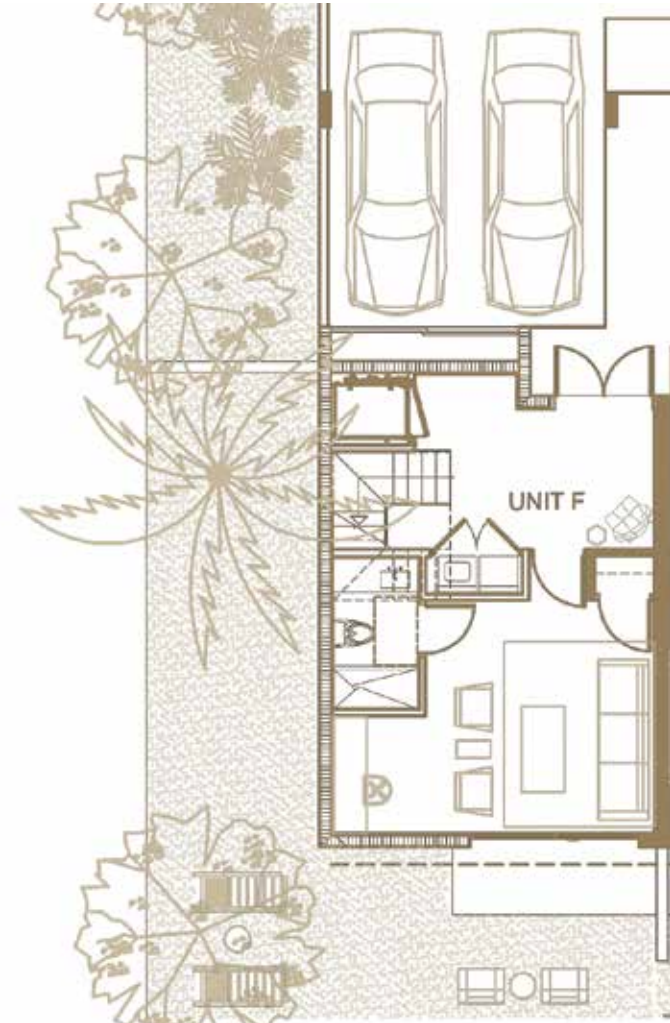
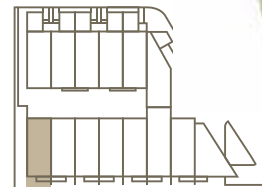
OUTDOOR LIVING 1,013 sq. ft. 94 sq. mt.

**TOTAL 3,667 sq. ft. 340 sq. mt.**

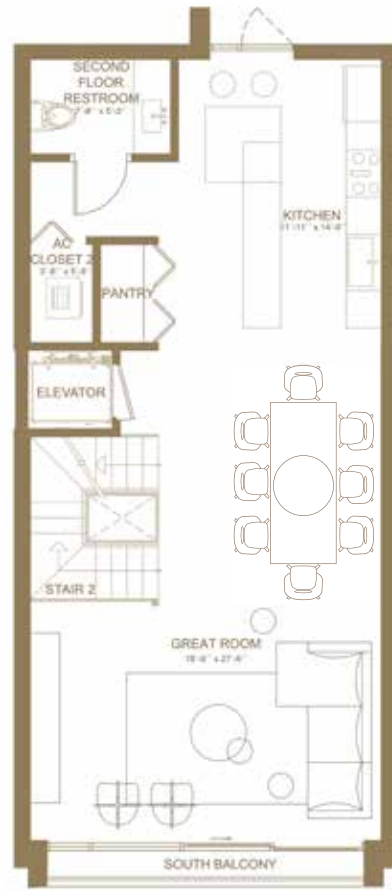


# PALMETTO *palm*

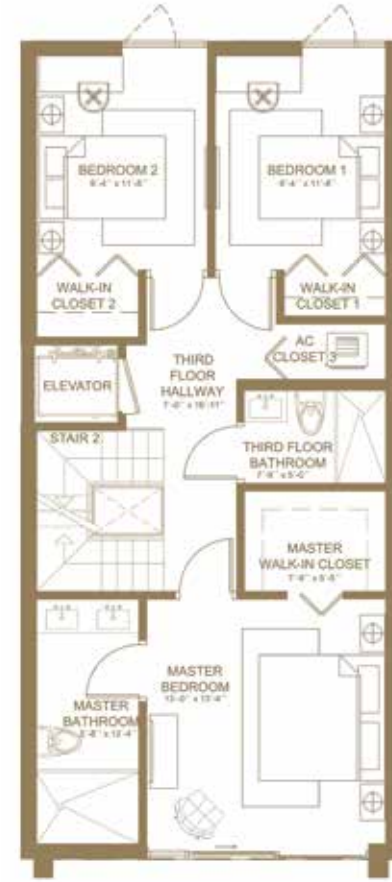
Townhome Units shown are examples of townhome unit types and may not depict actual townhome units. Stated square footages are ranges for a particular townhome unit type and are measured to the exterior boundaries of the exterior walls and the centerline of interior demising walls and in fact vary from the area that would be determined by using the description and definition of the "unit" set forth in the Declaration of Covenants and Restrictions for Palm Villas Homeowners' Association (which generally only includes the interior airspace between the perimeter walls and excludes interior structural components). All depictions of appliances, plumbing fixtures, equipment, counters, soffits, floor coverings and other matters of detail are conceptual only and are not necessarily included in each unit. Consult your agreement for the items included with the Unit. Dimensions and square footage are approximate, will vary with specific unit type, and may vary with actual construction. Additionally, measurements of rooms set forth on any floor plan are nominal and generally taken at the greatest points of each given room (as if the room were a perfect rectangle), without regard for any cutouts. Unit orientation and windows (including number, size, orientation and awnings), balcony (including configuration, size and railing/balustrade), structure and mechanical chases may vary.



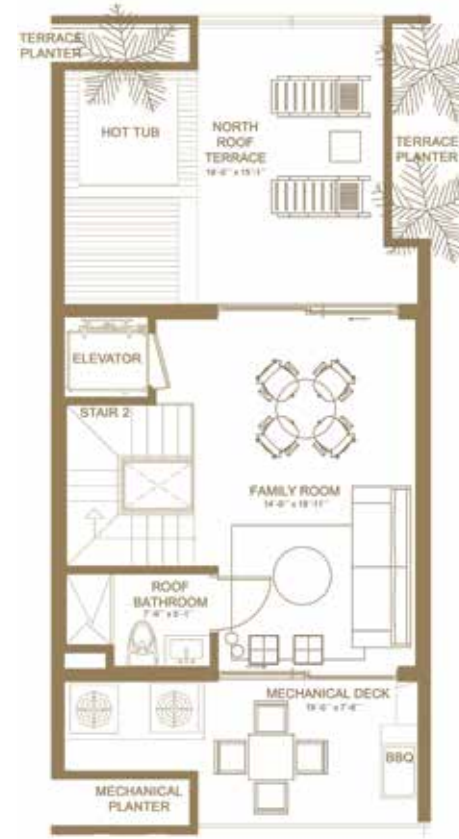
GROUND FLOOR  
Garage Entry



SECOND FLOOR  
Main Living



THIRD FLOOR  
Master Suite and Bedrooms



FOURTH FLOOR  
Rooftop Terrace and Amenities

## PALMETTO PALM RESIDENCE 14

RESIDENCE DESCRIPTION  
3 BED | 4.5 BATH  
Family + Den + Garden + Balcony + 2 Covered Parking Spaces

TOTAL A/C	2,699 sq. ft.	250 sq. mt.
OUTDOOR LIVING	1,365 sq. ft.	127 sq. mt.
<b>TOTAL</b>	<b>4,064 sq. ft.</b>	<b>377 sq. mt.</b>

